

T-PLUS Products

Best Dental Implant
For GenNext Dentists.



T-Plus Implant Tech. Co., Ltd.

Life Restarts

T-PLUS is a leading implant-based manufacturer established by Korean dentist & Taiwan dentists in Taiwan. As technology transfers from South Korea. T-PLUS has a stable and well quality product system such as Ti-Star (designed by Dr. Ou, tissue level implant), A Plus (Bone level), ST (Bone level) for selling more than 10 years. Since 2018 the world leader dental implant brand Straumann Group made the decision to invest in T-PLUS as the significant shareholder in 2019.



T-PLUS History

2008

Dec Established in New Taipei City, Taiwan.

2009

May T-PLUS Implant Tech. Co., Ltd. Opening.

2010

Jun GMP Approved.

2011

Sep CE Cert. approved for Ti-Star & A Plus Implant System.

2013

Apr CFDA Approved.

Dec FDA Approved.

2014

Nov Straumann invest 48% in T-PLUS.

2018

Straumann increase invest in T-PLUS to 60%.

Life Plus With T-PLUS

As a new implant brand at the time, T-Plus placed a premium on "Quality." The majority of titanium burr is reduced using the CNC process and a special skill. Moreover, our quality policy for production technicians is a 100% Q.C inspection. T-PLUS is pleased to be a [StraumannGroup Certified Partner] beginning in 2019.

The Straumann headquarters commenced to manage the titanium roll purchasing sources. If you follow the leader's lead, you will be able to maintain not only a stable but also a great level of quality you expected.

T-PLUS Vision

Forseing Your Smile With T-PLUS

The world is changed, patients will be actively engaged. T-PLUS will keep focusing on our professional: implant manufacturing and support for dental solutions ranging from a single missing tooth to a complex missing case. We worked hard every day to provide a reliable product to patients, dentists, and ourselves. Let's foresee your smile with T-PLUS in the near future.



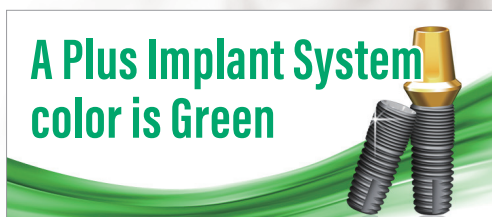
Notice

Available products may vary by Country due to registration process.

Images in this catalog might be different from actual products. Specifications are subject to change without prior notice.

How to USE?

For your easily reading this catalog, all product system are indexed by color and title.





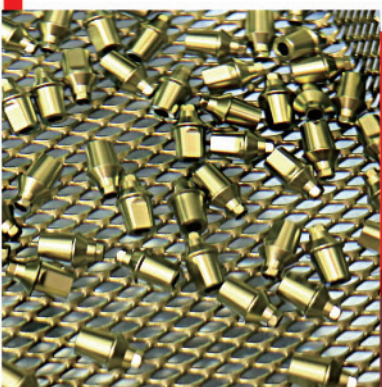
LIFE RESTARTS

Your life will be reshaped by teeth.

Let more people who need dental implants do not need to spend the unbelievable-high cost, because T-PLUS feels the beauty of life again

“My life restarts from retirement.”

With the continuous improvement of living standards and the aging trend, has the service life of your teeth been extended? In addition to partial or complete inability to chew, missing teeth may also lead to an increase in aging and recession. When you have spent most of your life to be free, but your health problems are caused by long-term tooth loss due to periodontal disease, tooth decay ... Is it stills your life that you want to be?



“Swiss Craft, Made in Taiwan”

Taiwan's precision machining technology is well-known all over the world. Taiwan is used as a base for implants to develop to the world.

Since T-PLUS was founded in 2008, 100% full inspection has helped reduce the worries of dentists in the process of dental implantation. TFDA, NMPA, ISO1348, CE, FDA ... and other certifications have been obtained, and it will be directly taken over by the Swiss Straumann Group in mid of 2019. Under the group's management strategy, everything will be controlled from the source. It can be seen that the safe and reliable products produced by T-PLUS are definitely your unquestionable choice!





Bone level submerged
Implant System

ST Implant System

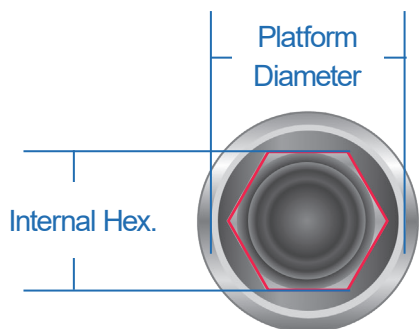
- Hex. Connection.
- Morse Taper 11 degree
- Double Thread & Cutting Edge
- SLA Surface



*This manual is for dentist or related specialist use only.

Fixture Product & Package/ 种植体产品及包装

I. Fixture Dimension/ 种植体规格



Morse Taper 11 degree
莫氏锥度 11 度

Internal Hex Connection
内六角连结

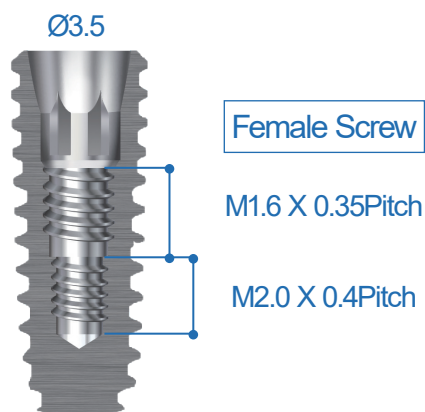
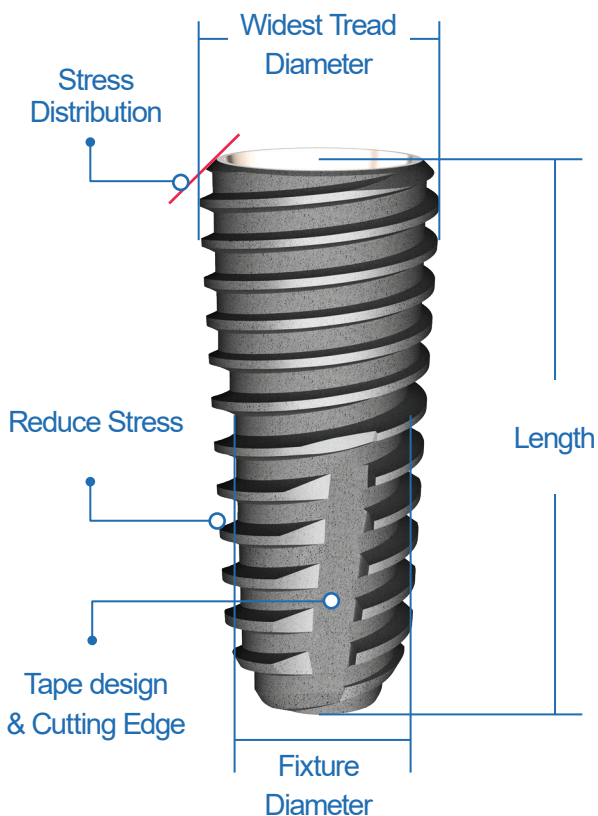
Stress Distribution.
应力分散

Platform switch design for preserving bone.
平台转移设计以保护骨头

Reduce Stress.
减少压力

The arch thread after SLA surface treatment can reduce the stress compare with squared or v shape thread.
经过 SLA 处理后的弧型螺纹比起方型、V 型螺纹可相对减少骨头的应力承受。

Tape design & Cutting Edge
锥型植体及排料槽



| Fixture Diameter | Widest Tread Diameter | Length (mm) | Platform Diameter | Type | Hex. Size | Female Screw |
|------------------|-----------------------|---------------------------------------|-------------------|---------|-----------|-------------------------------------|
| Ø 3.5 | Ø 3.7 | 8.5 / 10.0 / 11.5 / 13.0 / 15.0 | Ø 3.1 | Mini | 2.1 | M1.6 X 0.35Pitch M2.0 X 0.4Pitch |
| Ø 4.0 | Ø 4.2 | 7.0 / 8.5 / 10.0 / 11.5 / 13.0 / 15.0 | Ø 3.6 | Regular | 2.5 | M2.0 X 0.4Pitch |
| Ø 4.5 | Ø 4.6 | 7.0 / 8.5 / 10.0 / 11.5 / 13.0 / 15.0 | Ø 4.0 | | | |
| Ø 5.0 | Ø 5.1 | 7.0 / 8.5 / 10.0 / 11.5 / 13.0 / 15.0 | Ø 4.5 | | | |

II. Fixture Size/ 植体尺寸

(Unit : mm)
(单位 : mm)

Mini Ø3.5

- Cover Screw ASTCS04S Included.
- 包含封口螺絲 ASTCS04S

| Fixture Diameter | Length (L) | Ref. Code |
|------------------|------------|-----------|
| Ø 3.5 | 8.5 | FSTI3508H |
| | 10.0 | FSTI3510H |
| | 11.5 | FSTI3511H |
| | 13.0 | FSTI3513H |
| | 15.0 | FSTI3515H |



Regular Ø4.0

- Cover Screw ASTCS04 Included.
- 包含封口螺絲 ASTCS04

| Fixture Diameter | Length (L) | Ref. Code |
|------------------|------------|-----------|
| Ø 4.0 | 7.0 | FSTI4007H |
| | 8.0 | FSTI4008H |
| | 10.0 | FSTI4010H |
| | 11.5 | FSTI4011H |
| | 13.0 | FSTI4013H |
| | 15.0 | FSTI4015H |



Regular Ø4.5

- Cover Screw ASTCS04 Included.
- 包含封口螺絲 ASTCS04

| Fixture Diameter | Length (L) | Ref. Code |
|------------------|------------|-----------|
| Ø 4.5 | 7.0 | FSTI4507H |
| | 8.0 | FSTI4508H |
| | 10.0 | FSTI4510H |
| | 11.5 | FSTI4511H |
| | 13.0 | FSTI4513H |
| | 15.0 | FSTI4515H |



Regular Ø5.0

- Cover Screw ASTCS04 Included.
- 包含封口螺絲 ASTCS04

| Fixture Diameter | Length (L) | Ref. Code |
|------------------|------------|-----------|
| Ø 5.0 | 7.0 | FSTI5007H |
| | 8.0 | FSTI5008H |
| | 10.0 | FSTI5010H |
| | 11.5 | FSTI5011H |
| | 13.0 | FSTI5013H |
| | 15.0 | FSTI5015H |



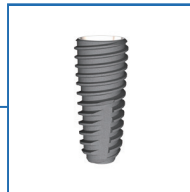
III. Package/ 包装

- Ampule 安瓿

One hand can operate



Upper Cover :access to Fixture
上盖：连结至植体处



Fixture
植体



Fixture Pick-up
植体取出

Lower Cover :access to Cover Screw
下盖：连结至覆盖螺纹处



Cover Screw
覆盖螺丝



Cover Screw Pick-up
使用螺丝刀取出覆盖螺丝

Ampule was designed to open with one hand for convenience!

此安瓿为可用单手打开的方便式设计



Handpiece connector
手机用延长杆

Perfectly matches with the internal connection of a fixture :
No accidental dropping!

完美的与内连接植体做接合
不会有意外掉落



Hexagon connection of ST
Fixture
ST 植体的内连接示意

- Coding 编码

ST
Internal Fixture STERILE R

Ø 3.5x8.5mm
Mount-Free
(with Cover Screw)

Product name

Size
Ø=Fixture Diameter

| | | |
|---------------|-----|----------------|
| Ref. Code | REF | FST13508H |
| Lot. Number | LOT | TM-102090501A1 |
| Serial Number | SN | 0001 |
| Product Date | MM | 2013-05-05 |
| Expiry Date | YY | 2018-05-04 |

Attention, Remark the Manual

Do Not Reuse

*Small diameter implants and angled abutments are not recommended for use in the molar region of the mouth.
Immediate use, no storage after completion of the steam sterilization.

T-Plus Implant Tech. Co., Ltd.
No.41, Hsueh-Shan Rd., Neihu Dist.
New Taipei City 24669, Taiwan(R.O.C.)

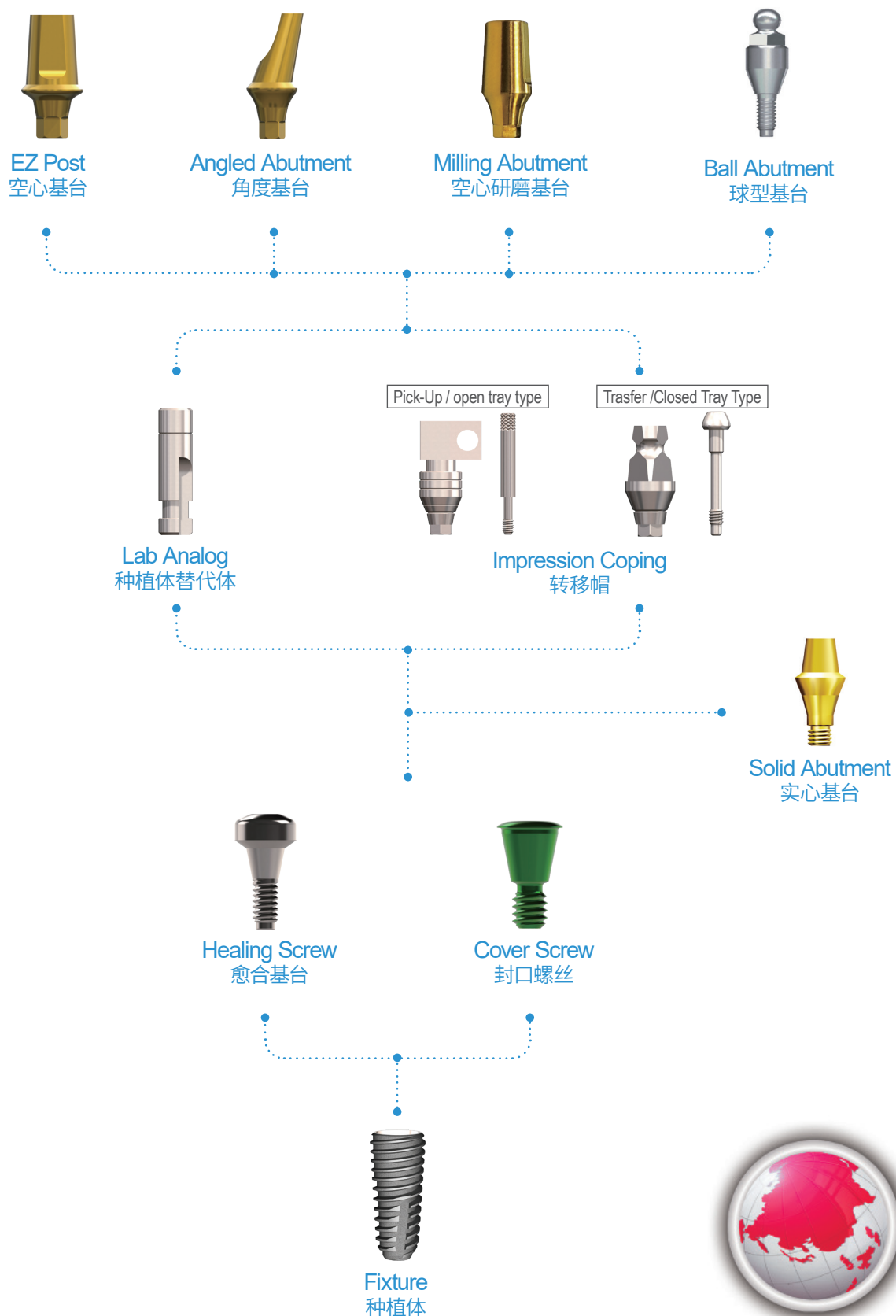


1. Safety Box
2. Safety Box Sticker
3. Patient Chart Sticker
4. Cody Ampule
5. Medical Packaging Paper & Pet
6. IFU(Instruction for use)

1. 植体外盒
2. 植体外盒标签
3. 病历标
4. 安瓿
5. 医疗级包装纸及 PET 塑料盒
6. 仿单 (使用说明)

Abutment & Prosthetic Option/ 基台及假牙选择

I. Fixture level prosthesis/ 植体应用相关配件



II. Cover Screw & Healing Screw/ 覆盖及愈合螺丝

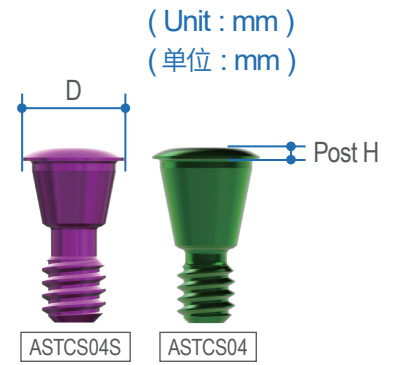
Cover Screw (Regular)

封口螺丝

- ASTCS04S used for fixture (Ø3.5)
- ASTCS04 used for fixture (Ø4.0, Ø4.5, Ø5.0)
- Uses Hand Driver (1.2Hex.)
- Recommend torque : 5-8Ncm

- 覆盖螺丝 ASTCS04S (紫色 Mini) 供 3.5 植体使用；
- 覆盖螺丝 ASTCS04 (绿色 Regular) 供 4.0 含以上体使用
- 使用 1.2Hex. 的螺丝刀
- 建议扭力：5-8Ncm

| Diameter (D) | Post Height | Ref. Code |
|--------------|-------------|-----------|
| 3.15 | 0.4 | ASTCS04S |
| 3.7 | 0.4 | ASTCS04 |



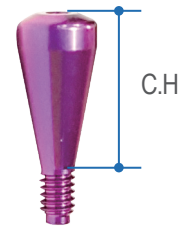
Healing Screw (Mini)

愈合基台

- Use for fixture (Ø3.5)
- Uses Hand Driver (1.2Hex.)
- Recommend torque : 5-8Ncm

- 供 3.5 植体使用
- 使用 1.2Hex. 的螺丝刀
- 建议扭力：5-8Ncm

| Diameter (D) | Cuff Height (C.H) | Ref. Code |
|--------------|-------------------|-----------|
| Ø 4.0 | 3.0 | ASTHS403S |
| | 5.0 | ASTHS405S |
| | 7.0 | ASTHS407S |
| Ø 4.5 | 3.0 | ASTHS453S |
| | 5.0 | ASTHS455S |
| | 7.0 | ASTHS457S |



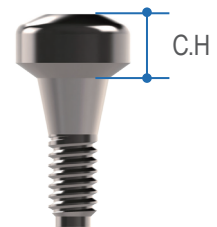
Healing Screw (Regular)

愈合基台

- Use for fixture (Ø4.0, Ø4.5, Ø5.0)
- Uses Hand Driver (1.2Hex.)
- Recommend torque : 5-8Ncm

- 供 4.0、4.5、5.0 植体使用
- 使用 1.2Hex. 的螺丝刀
- 建议扭力：5-8Ncm

| Diameter (D) | Cuff Height (C.H) | Ref. Code |
|--------------|-------------------|-----------|
| Ø 5.0 | 3.0 | ASTHS503 |
| | 5.0 | ASTHS505 |
| | 7.0 | ASTHS507 |
| Ø 6.0 | 3.0 | ASTHS603 |
| | 5.0 | ASTHS605 |
| | 7.0 | ASTHS607 |



III. Abutment Option/ 基台选择

*Cuff Height : 牙肉高度
*Post Height : 工作区高度

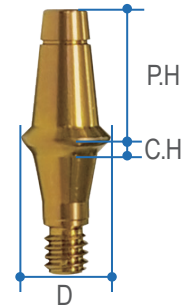
Solid Abutment (Mini)

实心基台

- Mini type for dia 3.5 fixture only.
- One piece abutment for cement type prosthetic.
- Tightly with 1.2 Hex. Hand driver.
- Recommend torque: 25 Ncm

- Mini 仅供 3.5 植体使用
- 一件式基台适合 cement type 膺复物
- 使用 Hex.1.2 螺丝刀扭紧
- 建议扭力：25Ncm

| Diameter (D) | Cuff Height (C.H) | Post Height (P.H) | Ref. Code |
|--------------|-------------------|-------------------|------------|
| Ø 4.0 | 1.0 | 5.5 | ASTSA4015S |
| | 2.0 | | ASTSA4025S |
| | 3.0 | | ASTSA4035S |
| | 4.0 | | ASTSA4045S |
| | 5.0 | | ASTSA4055S |
| Ø 4.5 | 1.0 | 4.0 | ASTSA4514S |
| | 2.0 | | ASTSA4524S |
| | 3.0 | | ASTSA4534S |
| | 4.0 | | ASTSA4544S |
| | 5.0 | | ASTSA4554S |
| Ø 4.5 | 1.0 | 5.5 | ASTSA4515S |
| | 2.0 | | ASTSA4525S |
| | 3.0 | | ASTSA4535S |
| | 4.0 | | ASTSA4545S |
| | 5.0 | | ASTSA4555S |



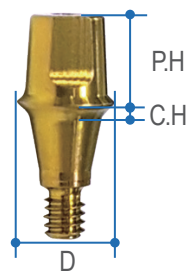
Solid Abutment (Regular)

实心基台

- Regular type for dia 4.0/4.5/5.0 fixture.
- One piece abutment for cement type prosthetic.
- Tightly with 1.2 Hex. Hand driver.
- Recommend torque: 25 Ncm

- Regular 供 4.0/4.5/5.0 植体使用
- 一件式基台适合 cement type 膺复物
- 使用 Hex.1.2 螺丝刀扭紧
- 建议扭力：25Ncm

| Diameter (D) | Cuff Height (C.H) | Post Height (P.H) | Ref. Code |
|--------------|-------------------|-------------------|-----------|
| Ø 4.5 | 1.0 | 4.0 | ASTSA4514 |
| | 2.0 | | ASTSA4524 |
| | 3.0 | | ASTSA4534 |
| | 4.0 | | ASTSA4544 |
| | 5.0 | | ASTSA4554 |
| Ø 4.5 | 1.0 | 5.5 | ASTSA4515 |
| | 2.0 | | ASTSA4525 |
| | 3.0 | | ASTSA4535 |
| | 4.0 | | ASTSA4545 |
| | 5.0 | | ASTSA4555 |

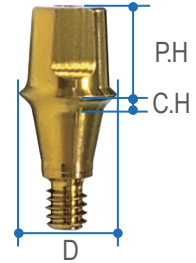


Solid Abutment (Regular)

实心基台

- Regular type for dia 4.0/4.5/5.0 fixture.
- One piece abutment for cement type prosthetic.
- Tightly with 1.2 Hex. Hand driver.
- Recommend torque: 25 Ncm
- Regular 供 4.0/4.5/5.0 植体使用
- 一件式基台适合 cement type 膺复物
- 使用 Hex.1.2 螺丝刀扭紧
- 建议扭力：25Ncm

| Diameter (D) | Cuff Height (C.H) | Post Height (P.H) | Ref. Code |
|--------------|-------------------|-------------------|-----------|
| Ø 5.0 | 1.0 | 5.5 | ASTSA5015 |
| | 2.0 | | ASTSA5025 |
| | 3.0 | | ASTSA5035 |
| | 4.0 | | ASTSA5045 |
| | 5.0 | | ASTSA5055 |
| Ø 6.0 | 1.0 | 5.5 | ASTSA6015 |
| | 2.0 | | ASTSA6025 |
| | 3.0 | | ASTSA6035 |
| | 4.0 | | ASTSA6045 |
| | 5.0 | | ASTSA6055 |

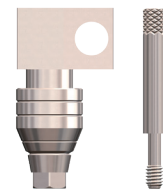


Impression Coping

转移帽

- ASTPIC3511HS used for fixture (Ø3.5), guide pin ASTIPS150L included.
- ASTPIC5011H used for fixture (Ø4.0, Ø4.5, Ø5.0,) guide pin ASTIPR150L included.
- ASTPIC3511HS 仅供 3.5 植体使用，包装含转移杆配件 ASTIPS150L
- ASTPIC5011H 供 4.0/4.5/5.0 植体使用，包装含转移杆配件 ASTIPR150L

| Type | Ref. Code |
|---------|--------------|
| Mini | ASTPIC3511HS |
| Regular | ASTPIC5011H |



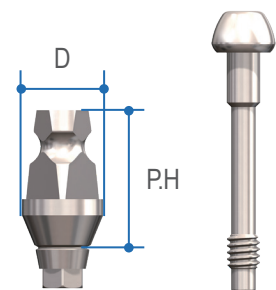
Pick-Up / open tray type

Impression Coping

转移帽

- For ASTIC350, guide pin ASTIGP350 included
- For ASTIC400, guide pin ASTIGP400 included

| Diameter (D) | Post Height (P.H) | Ref. Code |
|--------------|-------------------|-----------|
| Ø 4.0 | 6.5 | ASTIC350 |
| Ø 5.0 | 6.5 | ASTIC400 |



Transfer /Closed Tray Type

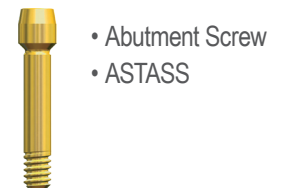
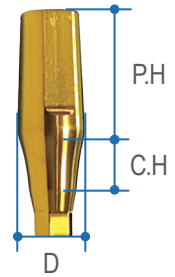
Milling Abutment (Mini)

空心研磨基台

- Mini type used for dia 3.5 fixture only.
- Abutment screw ASTASS included.
- Used Hex. 1.2 hand river.
- Recommend torque 25Ncm.

- Mini type 仅供 3.5 植体使用
- 包装内含基台螺丝 ASTASS
- 使用 Hex.1.2 螺丝刀扭紧
- 建议扭力 25Ncm

| Diameter (D) | Cuff Height (C.H) | Post Height (P.H) | Ref. Code |
|--------------|-------------------|-------------------|-------------|
| Ø 4.0 | 1.0 | 7.0 | ASTMA4017HS |
| | 2.0 | | ASTMA4027HS |
| | 3.0 | | ASTMA4037HS |
| | 4.0 | | ASTMA4047HS |
| | 5.0 | | ASTMA4057HS |
| Ø 5.0 | 1.0 | 7.0 | ASTMA5017HS |
| | 2.0 | | ASTMA5027HS |
| | 3.0 | | ASTMA5037HS |
| | 4.0 | | ASTMA5047HS |
| | 5.0 | | ASTMA5057HS |



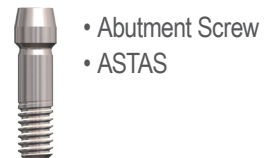
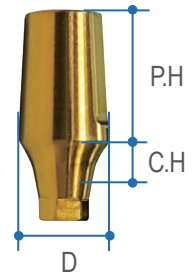
Milling Abutment (Regular)

空心研磨基台

- Regular type for dia 4.0/4.5/5.0 fixture .
- Abutment screw ASTAS included.
- Used Hex. 1.2 hand river.
- Recommend torque 25Ncm.

- Regular type 供 4.0/4.5/5.0 植体使用
- 包装内含基台螺丝 ASTAS
- 使用 Hex.1.2 螺丝刀扭紧
- 建议扭力 25Ncm

| Diameter (D) | Cuff Height (C.H) | Post Height (P.H) | Ref. Code |
|--------------|-------------------|-------------------|------------|
| Ø 4.0 | 1.0 | 7.0 | ASTMA4017H |
| | 2.0 | | ASTMA4027H |
| | 3.0 | | ASTMA4037H |
| | 4.0 | | ASTMA4047H |
| | 5.0 | | ASTMA4057H |
| Ø 5.0 | 1.0 | 7.0 | ASTMA5017H |
| | 2.0 | | ASTMA5027H |
| | 3.0 | | ASTMA5037H |
| | 4.0 | | ASTMA5047H |
| | 5.0 | | ASTMA5057H |
| Ø 6.0 | 1.0 | 7.0 | ASTMA6017H |
| | 2.0 | | ASTMA6027H |
| | 3.0 | | ASTMA6037H |
| | 4.0 | | ASTMA6047H |
| | 5.0 | | ASTMA6057H |

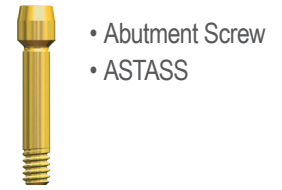
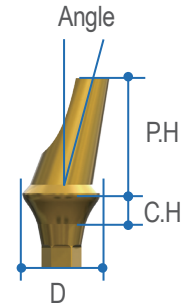


Angled Abutment (Mini) 角度基台

- Mini type used for dia 3.5 fixture only.
- Abutment screw ASTASS included.
- Used Hex. 1.2 hand river.
- Recommend torque 25Ncm.
- Angled 15 degree and 25 degree available.

- Mini type 仅供 3.5 植体使用
- 包装内含基台螺丝 ASTASS
- 使用 Hex.1.2 螺丝刀扭紧
- 建议扭力 25Ncm
- 15 & 25 度提供选择

| Diameter (D) | Cuff Height (C.H) | Angle | Ref. Code |
|--------------|-------------------|-------|-------------|
| Ø 4.0 | 2.0 | 15° | ASTAA4215HS |
| | 4.0 | | ASTAA4415HS |
| | 2.0 | 25° | ASTAA4225HS |
| | 4.0 | | ASTAA4425HS |

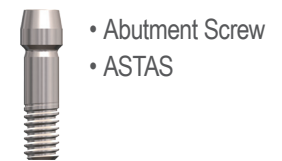
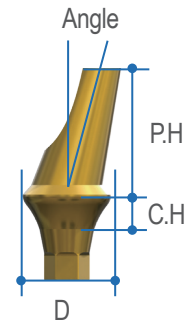


Angled Abutment (Regular) 角度基台

- Regular type for dia 4.0/4.5/5.0 fixture.
- Abutment screw ASTAS included.
- Used Hex. 1.2 hand river.
- Recommend torque 25Ncm.
- Angled 15 degree and 25 degree available.

- Regular type 供 4.0/4.5/5.0 植体使用
- 包装内含基台螺丝 ASTAS
- 使用 Hex.1.2 螺丝刀扭紧
- 建议扭力 25Ncm
- 15 & 25 度提供选择

| Diameter (D) | Cuff Height (C.H) | Angle | Ref. Code |
|--------------|-------------------|-------|------------|
| Ø 5.0 | 1.0 | 15° | ASTAA5115H |
| | 2.0 | | ASTAA5215H |
| | 3.0 | | ASTAA5315H |
| | 4.0 | | ASTAA5415H |
| | 5.0 | | ASTAA5515H |
| | 1.0 | 25° | ASTAA5125H |
| | 2.0 | | ASTAA5225H |
| | 3.0 | | ASTAA5325H |
| | 4.0 | | ASTAA5425H |
| | 5.0 | | ASTAA5525H |
| Ø 6.0 | 1.0 | 15° | ASTAA6115H |
| | 2.0 | | ASTAA6215H |
| | 3.0 | | ASTAA6315H |
| | 4.0 | | ASTAA6415H |
| | 5.0 | | ASTAA6515H |
| | 1.0 | 25° | ASTAA6125H |
| | 2.0 | | ASTAA6225H |
| | 3.0 | | ASTAA6325H |
| | 4.0 | | ASTAA6425H |
| | 5.0 | | ASTAA6525H |

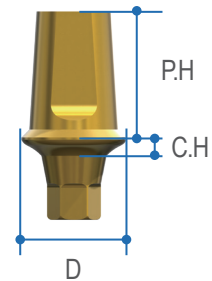


EZ Post Abutment (Mini)

空心基台

- Mini type ez post diameter 4.5 only used for dia 3.5 fixture.
- Post height available for 5.5 & 7.0mm.
- Cuff height available for 1.0/2.0/3.0/4.0/5.0mm.
- Tightly with 1.2 Hex. hand driver.
- Recommend torque:25 Ncm.
- Mini type 直径 4.5 标准基台仅供 3.5 植体使用。
- 工作区高度提供 5.5 & 7.0mm 之选择。
- 牙肉高度提供 1.0/2.0/3.0/4.0/5.0 之选择。
- 使用 1.2Hex. 螺丝刀扭紧。
- 建议扭力：25Ncm。

| Diameter (D) | Cuff Height (C.H) | Post Height (P.H) | Ref. Code |
|--------------|-------------------|-------------------|-------------|
| Ø 4.5 | 1.0 | 5.5 | ASTEP4515HS |
| | 2.0 | | ASTEP4525HS |
| | 3.0 | | ASTEP4535HS |
| | 4.0 | | ASTEP4545HS |
| | 5.0 | | ASTEP4555HS |
| | 1.0 | 7.0 | ASTEP4517HS |
| | 2.0 | | ASTEP4527HS |
| | 3.0 | | ASTEP4537HS |
| | 4.0 | | ASTEP4547HS |
| | 5.0 | | ASTEP4557HS |



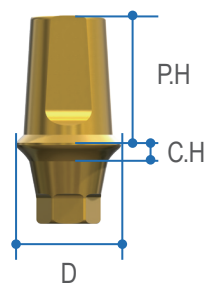
- Abutment Screw
- ASTASS

EZ Post Abutment (Regular)

空心基台

- Regular type ez post available with 4.5/5.0/6.0 for dia 4.0 (and above) fixture.
- Post height available for 4.0/5.5 / 7.0mm
- Cuff height available for 1.0/2.0/3.0/4.0/5.0mm
- Tightly with 1.2 Hex. hand driver.
- Recommend torque:25 Ncm.
- Regular type 标准基台提供 4.0/5.0/6.0 三种直径供 4.0/4.5/5.0 植体使用。
- 工作区高度提供 4.0/ 5.5/7.0mm 之选择。
- 牙肉高度提供 1.0/2.0/3.0/4.0/5.0 之选择。
- 使用 1.2Hex. 螺丝刀扭紧。
- 建议扭力：25Ncm。

| Diameter (D) | Cuff Height (C.H) | Post Height (P.H) | Ref. Code |
|--------------|-------------------|-------------------|------------|
| Ø 4.5 | 1.0 | 5.5 | ASTEP4515H |
| | 2.0 | | ASTEP4525H |
| | 3.0 | | ASTEP4535H |
| | 4.0 | | ASTEP4545H |
| | 5.0 | | ASTEP4555H |
| | 1.0 | 7.0 | ASTEP4517H |
| | 2.0 | | ASTEP4527H |
| | 3.0 | | ASTEP4537H |
| | 4.0 | | ASTEP4547H |
| | 5.0 | | ASTEP4557H |



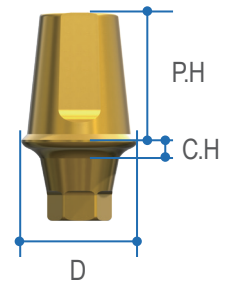
- Abutment Screw
- ASTAS

EZ Post Abutment (Regular)

空心基台

- Regular type ez post available with 4.5/5.0/6.0 for dia 4.0 (and above) fixture.
- Post height available for 4.0/5.5 / 7.0mm.
- Cuff height available for 1.0/2.0/3.0/4.0/5.0mm.
- Tightly with 1.2 Hex. hand driver.
- Recommend torque:25 Ncm.
- Regular type 标准基台提供 4.0/5.0/6.0 三种直径供 4.0/4.5/5.0 植体使用。
- 工作区高度提供 4.0/ 5.5/7.0mm 之选择。
- 牙肉高度提供 1.0/2.0/3.0/4.0/5.0 之选择。
- 使用 1.2Hex. 螺丝刀扭紧。
- 建议扭力：25Ncm。

| Diameter (D) | Cuff Height (C.H) | Post Height (P.H) | Ref. Code |
|--------------|-------------------|-------------------|------------|
| Ø 5.0 | 1.0 | 4.0 | ASTEP5014H |
| | 2.0 | | ASTEP5024H |
| | 3.0 | | ASTEP5034H |
| | 4.0 | | ASTEP5044H |
| | 5.0 | | ASTEP5054H |
| | 1.0 | 5.5 | ASTEP5015H |
| | 2.0 | | ASTEP5025H |
| | 3.0 | | ASTEP5035H |
| | 4.0 | | ASTEP5045H |
| | 5.0 | | ASTEP5055H |
| | 1.0 | 7.0 | ASTEP5017H |
| | 2.0 | | ASTEP5027H |
| | 3.0 | | ASTEP5037H |
| | 4.0 | | ASTEP5047H |
| | 5.0 | | ASTEP5057H |
| Ø 6.0 | 1.0 | 4.0 | ASTEP6014H |
| | 2.0 | | ASTEP6024H |
| | 3.0 | | ASTEP6034H |
| | 4.0 | | ASTEP6044H |
| | 5.0 | | ASTEP6054H |
| | 1.0 | 5.5 | ASTEP6015H |
| | 2.0 | | ASTEP6025H |
| | 3.0 | | ASTEP6035H |
| | 4.0 | | ASTEP6045H |
| | 5.0 | | ASTEP6055H |
| | 1.0 | 7.0 | ASTEP6017H |
| | 2.0 | | ASTEP6027H |
| | 3.0 | | ASTEP6037H |
| | 4.0 | | ASTEP6047H |
| | 5.0 | | ASTEP6057H |



- Abutment Screw
- ASTAS

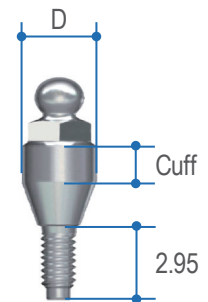
Ball Abutment (Mini)

球型基台

- ball abutment used for full edentulous and overdenture case.
- mini type used for dia 3.5 fixture.
- Cuff height available for 1.0/2.0/3.0/4.0/5.0mm.

- 球型基台使用于全口无牙及全口假牙托。
- mini type 球形基台仅供 3.5 植体使用
- 肉肉高度提供 1.0/2.0/3.0/4.0/5.0 之选择。

| Diameter (D) | Cuff Height (C.H) | Ref. Code |
|--------------|-------------------|------------|
| Ø2.85 | 1.0 | ASTBA3510S |
| | 2.0 | ASTBA3520S |
| | 3.0 | ASTBA3530S |
| | 4.0 | ASTBA3540S |
| | 5.0 | ASTBA3550S |



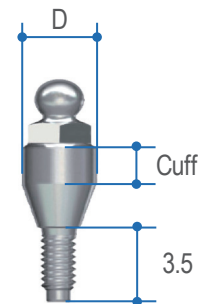
Ball Abutment (Regular)

球型基台

- ball abutment used for full edentulous and overdenture case.
- Regular type used for 4.0/ 4.5/5.0 fixture.
- Cuff height available for 1.0/ 2.0/ 3.0/ 4.0/ 5.0mm.

- 球型基台使用于全口无牙及全口假牙托。
- Regular type 球形基台供 4.0/4.5/5.0 植体使用。
- 牙肉高度提供 1.0/2.0/3.0/4.0/5.0 之选择。

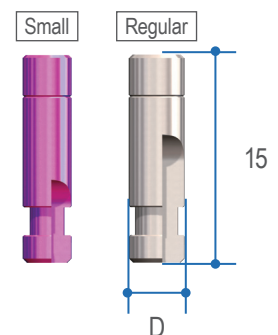
| Diameter (D) | Cuff Height (C.H) | Ref. Code |
|--------------|-------------------|-----------|
| Ø 3.4 | 1.0 | ASTBA3510 |
| | 2.0 | ASTBA3520 |
| | 3.0 | ASTBA3530 |
| | 4.0 | ASTBA3540 |
| | 5.0 | ASTBA3550 |



Lab Analog

种植体替代体

| Diameter (D) | Type | Ref. Code |
|--------------|---------|-----------|
| Ø 3.5 | Mini | ASTLA350H |
| Ø 4.0 | Regular | ASTLA400H |



ST Clinical Case



Clinical Case 1

- Courtesy of Dr. YANG, GIA-HUA

PT: Female

Age: 62

Medical History: Deaf & Dumb

此病患年纪较大才开始植第一颗牙，第一颗牙植入后效果不错，病患想再把左侧缺区补出部份咬合功能，因此治疗计划种：

#43 (ST 3.5*10mm)

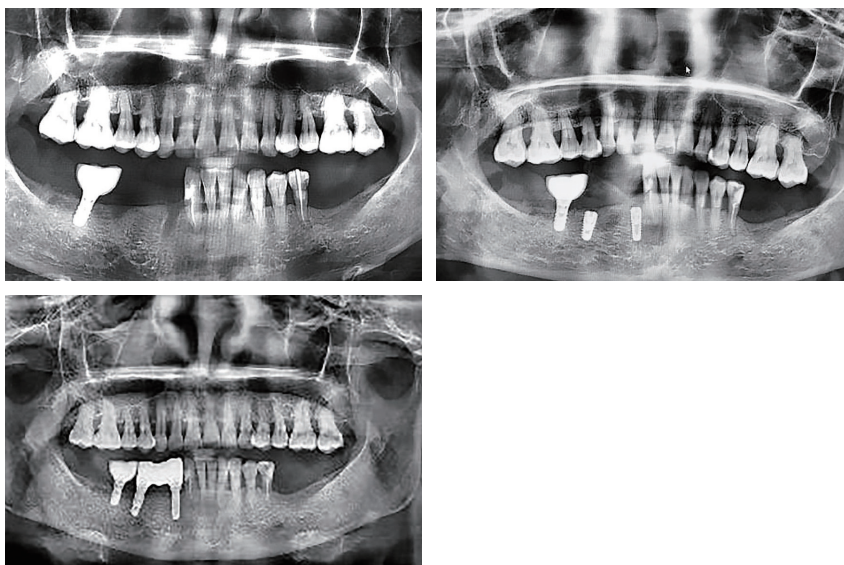
#45 (ST 4.0*8.5mm)

Since this patient had her first dental implant in elder age, she decide to have more implants which can makes her having part of chewing function.

Dr. Yang made the Tx plan after understanding her demand were as below:

#43 (ST3.5*10mm)

#45 (ST4.0*8.5mm)



Case No. T03-20160501-S002

Clinical Case 2

- Courtesy of Dr. YANG, GIA-HUA

PT: Female

Age: 64

Medical History: None

病患想要把左侧缺牙部份补足，治疗计划：

#44(ST 3.5*8.5mm) \

#45(ST4.0*7mm) \

#46(ST4.0*7mm) \

#47(ST5.0*7mm)

Dr. Yang made the treatment plan as

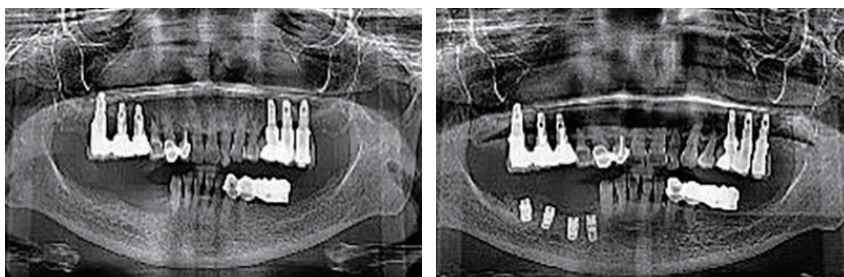
#44(ST 3.5*8.5mm) \

#45(ST4.0*7mm) \

#46(ST4.0*7mm) \

#47(ST5.0*7mm).

Because patient would like to recover her mandibular chewing function in quarter 4.



Case No. T03-20170427-S007

Clinical Case 3

- Courtesy of Dr. PAN, LUN-HUNG

PT: Female

Age: 61

Medical History: None

Fig 1. 由于#11/21/22患有牙周病，导致了牙齿的松动，此三颗需要被拔除。

There were #11/21/22 teeth moved. They were caused by periodontal diseases.

Fig 2. 拔除后患者考量预算选择做牙桥，于X ray底下，骨头条件不错，因此治疗计划：#11/21/22立即拔除，植入#11(ST 3.5*11mm) & #22(ST 3.5*11mm)。

Dr. Pan explained to patient and made the treatment plan as extraction the 3 teeth then immediate loading in #11(ST 3.5*11mm) & #22(ST 3.5*11mm), then making bridge crown on #11/21/22.

Fig 3. 后续修复为#11/21/22牙桥并保持追踪三年。

According to X ray checking and case kept followed up for 3 years.

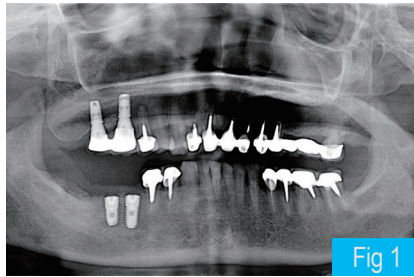


Fig 1

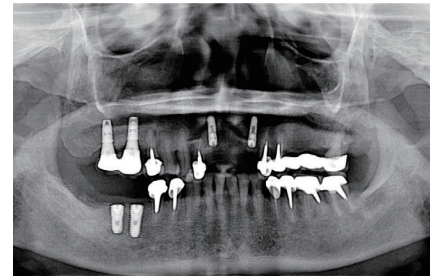


Fig 2.



Fig 3.

Clinical Case 4

- Courtesy of Dr. LIAO, TSUNG-HSUAN

PT: Female

Age: 42

Medical History: None

Fig 1. 由于病患撞到导致#25 牙齿断裂不完全，与患者确认后，进行即拔即植之治疗计划：

#25 (ST4.5*10mm)

Patient's #25 tooth fractured by bump. Dr. Liao made the treatment plan as extraction #25 and having immediate loading surgery after getting confirmation from the patient.

Fig 2. 先进行拔牙，并将#25 之血肉组织清理干净。

Extracted #25 Firstly, and cleaned the rest of the tissues.

Fig 3. 一步一步钻宽钻深，然后将 ST4.5*10mm 植体植入。

Drilling step by step then loading ST 4.5*10mm.

Fig 4. 使用植体洞度仪测量牙位 25 的初期稳定度值为 75，可做立即负载
Using ISQ checked the initial stability of 25, and getting ISQ value 75 as can be one stage surgery.

Fig 5. 术后 Pano 确认

post-surgery panoramic checking.

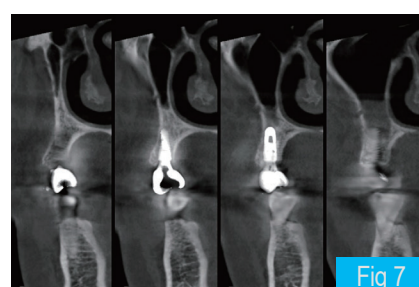
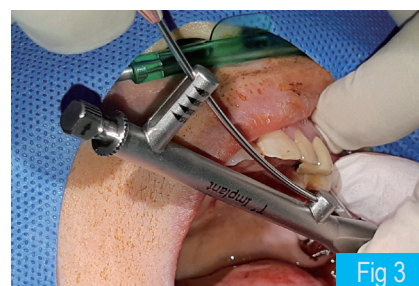
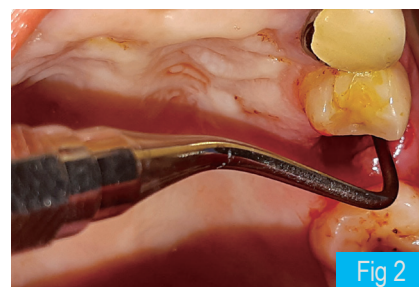
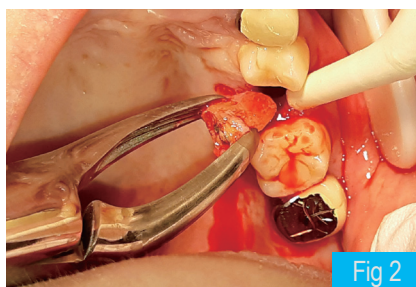
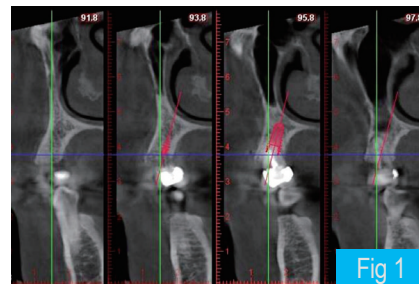
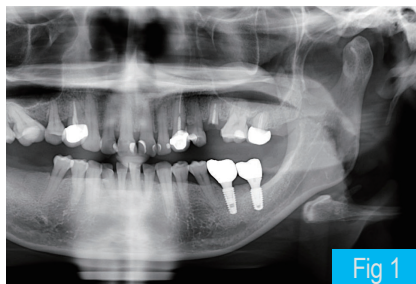
Fig 6. 术后 5 个月印模准备迎接 final crown

Took an impression after 5 month of surgery then prepared the final crown.

Fig 7. 术后 1 年追踪

Followed up after 1 year of surgery.

Case No. T01-20180627-S005



Clinical Case 5

- Courtesy of Dr. LIAO, TSUNG-HSUAN

PT: Male

Age: 50

Medical History: None

Fig 1. 病患的#24/25已做过牙桥，假牙桥断过一次，现在又断第二次，如此一来，便无法再继续做牙桥治疗，需要植牙了。医师的治疗计划如下：

Patient had a dental bridge on 24&25 before, however, it had broken one time. Now the bridge was broken a second time. There is no longer a bridge treatment plan and place implant needed.

Fig 2. 在拔牙前怕病患的舌头被残牙给刮到，先用流体树脂填平以避免病患舌头受伤

Before extraction of the teeth, I used flow resin to fill the hole of 24 & 25 to avoid scratching.

因#23已为种植牙，#23-26若要做牙桥，不够支撑，无法背负2颗无根基的牙齿，因此23-26的牙桥也不考虑了。

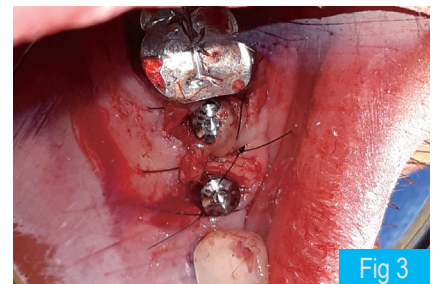
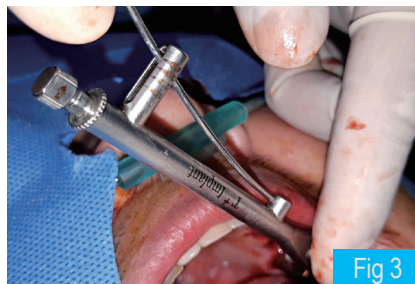
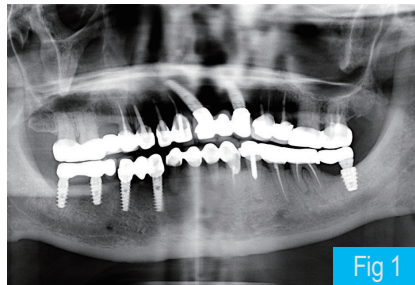
We can not consider the plan as bridge for 23-26 caused by there is only implant in #23 and it can not support them.

Fig 3. 确定植牙后，拔除#24/25，均植入ST(3.5*11.5mm)植体。

After confirmed the treatment plan as implant for #24 & 25, designing both #24 & 25 placing ST implant (3.5*11.5mm).

Fig 4. 术后Pano确认

post-surgery panoramic checking.

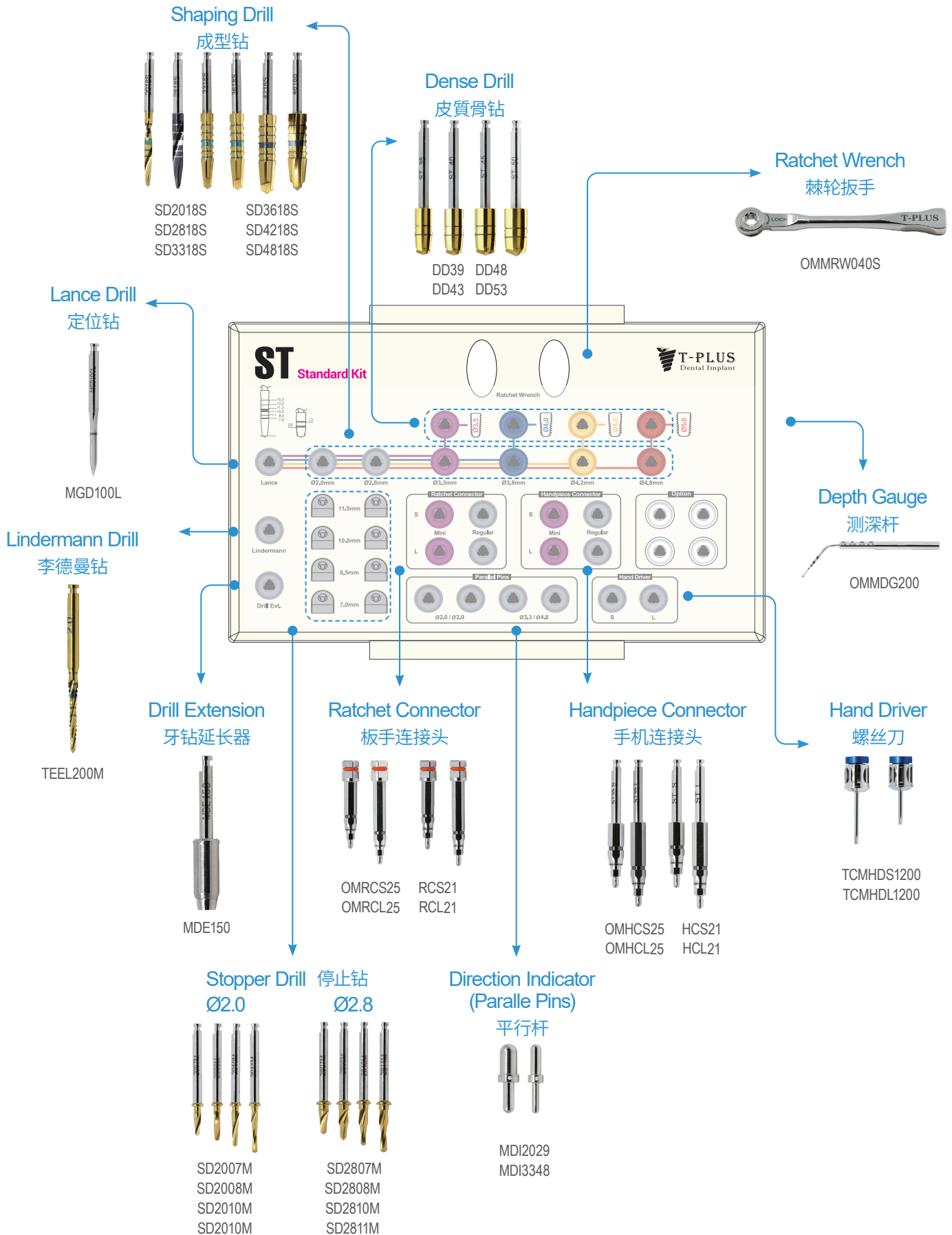




ST Surgical Kit

I. Standard Kit

| |
|-----------------|
| Ref. Code |
| ST Standard Kit |



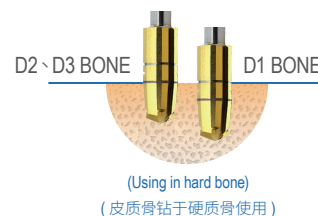
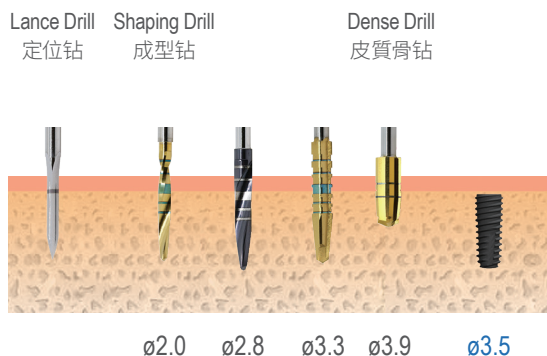
→ Surgical drilling sequence

Standar Edition

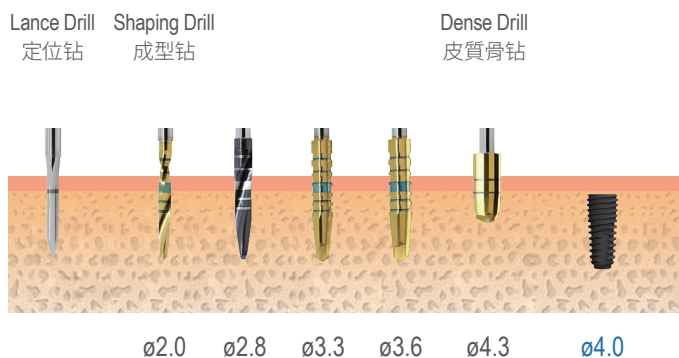
建议转速：

定位钻跟成型钻：800-1200 转；
 导向钻：500-800 转；
 手机连接头：20-50 转

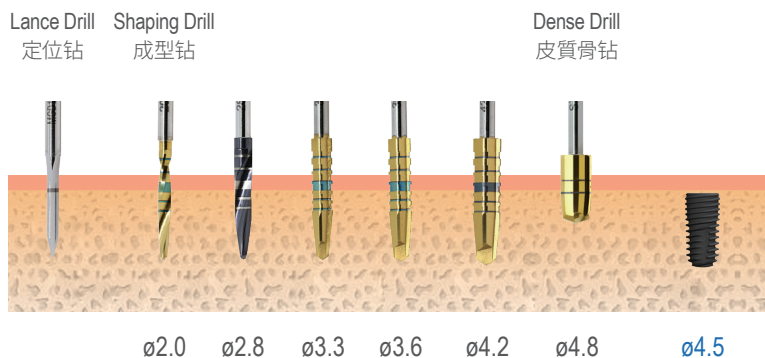
Drilling Ø3.5x10mm



Drilling Ø4.0x10mm



Drilling Ø4.510mm



建议转速:

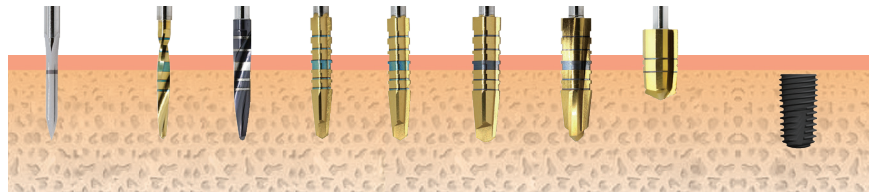
定位钻跟成型钻: 800-1200 转;
导向钻: 500-800 转;
手机接头: 20-50 转

Drilling $\text{Ø}5.0 \times 10\text{mm}$ 

Lance Drill
定位钻

Shaping Drill
成型钻

Dense Drill
皮質骨钻



Ø2.0

Ø2.8

Ø3.3

Ø3.6

Ø4.2

Ø4.8

Ø5.3

Ø5.0

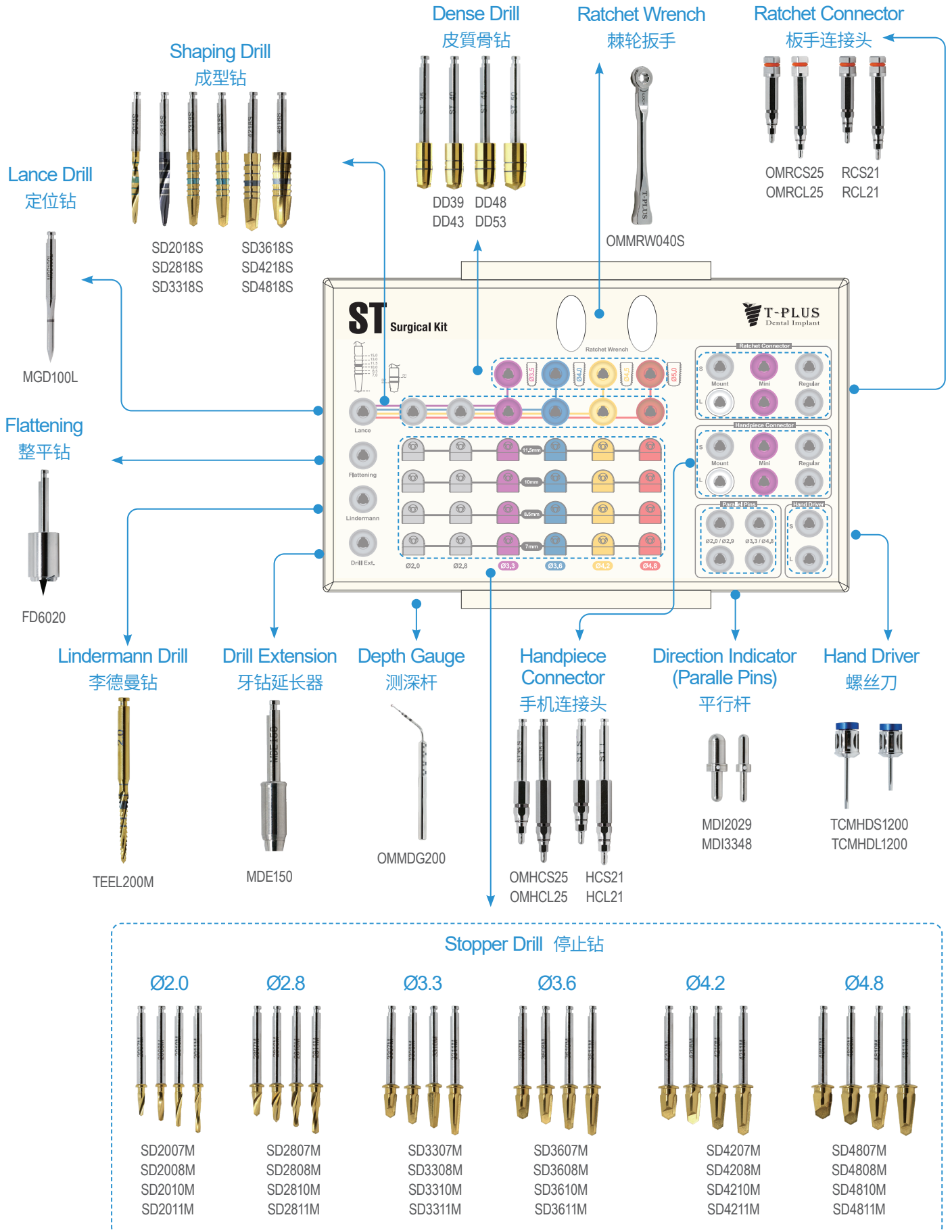
Ref. Code

OMKSTIM3000

Full Kit Case : 1MPKSTM110MG

II. Full Kit

此为国际版订购编号，部分器械在不同销售地区订购编号不同，
请详阅(III. Surgical Kit Components)。



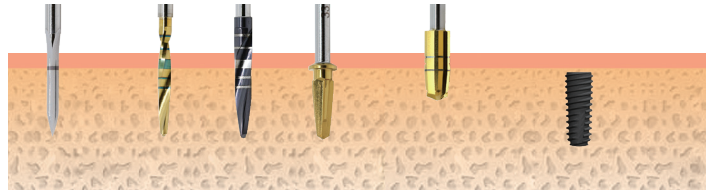
→ Surgical drilling sequence

Stopper Edition

Drilling Ø3.5x10mm

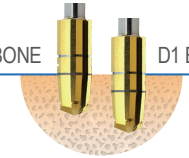


Lance Drill 定位钻 Shaping Drill 成型钻 Stopper Drill 停止钻 Dense Drill 皮質骨钻



Ø2.0 Ø2.8 Ø3.3 Ø3.9 Ø3.5

D2、D3 BONE D1 BONE

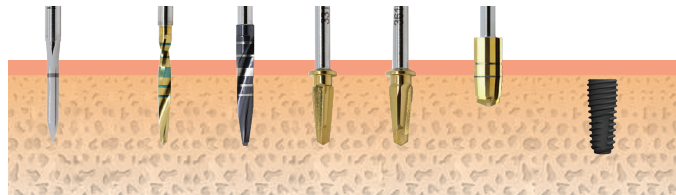


(Using in hard bone)
(皮质骨钻于硬质骨使用)

Drilling Ø4.0x10mm



Lance Drill 定位钻 Shaping Drill 成型钻 Stopper Drill 停止钻 Dense Drill 皮質骨钻

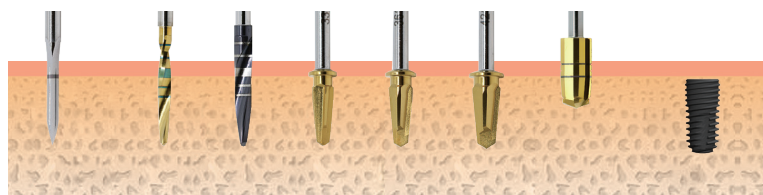


Ø2.0 Ø2.8 Ø3.3 Ø3.6 Ø4.3 Ø4.0

Drilling Ø4.510mm



Lance Drill 定位钻 Shaping Drill 成型钻 Stopper Drill 停止钻 Dense Drill 皮質骨钻



Ø3.3 Ø3.6 Ø4.2 Ø4.8 Ø4.5

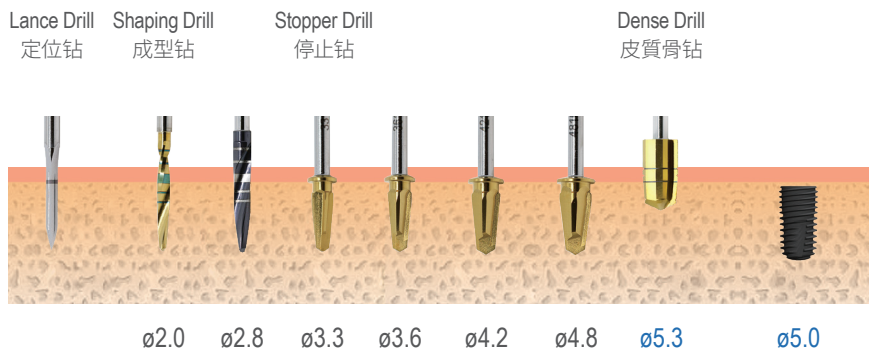
建议转速:

定位钻跟成型钻: 800-1200 转;
导向钻: 500-800 转;
手机接头: 20-50 转

Drilling $\varnothing 5.0 \times 10 \text{mm}$

建议转速:

定位钻跟成型钻: 800-1200 转;
导向钻: 500-800 转;
手机接头: 20-50 转



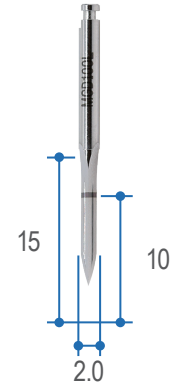
III. Surgical Kit Components

Lance Drill

定位钻

- Useful to make an indentation on cortical bone to confirm the exact drilling location.
- Advisable to go into the bone to the full length of a fixture.
- 使用定位钻在钻入预计之牙位，可以只是钻入一个钻洞，也可以钻深到黑线处与 10mm 植体同样长度。

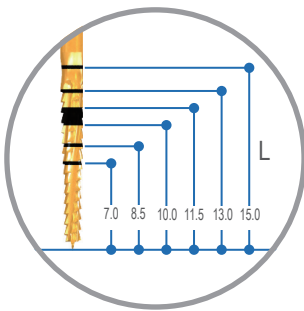
| Diameter (D) | Ref. Code |
|--------------|-----------|
| Ø 2.0 | MGD100L |



Lindermann Drill

李德曼钻

- Can correct the path during drilling.
- 可用于调整钻针路径。



| Diameter (D) | Ref. Code |
|--------------|-----------|
| Ø 2.0 | TEEL200M |

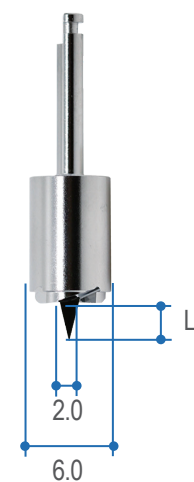


Flattening Drill

整平钻

- Flattens the irregular bone and enables the stopper drill to drill the exact depth.
- Designed to be engaged with Flattening Lance and Housing.
- 可压平不规则的骨头，使停止环钻能够钻出准确的深度。
- 此钻针设计结合整平及骨头定位之功能。

| Diameter (D) | Length (L) | Ref. Code |
|--------------|------------|-----------|
| Ø6.0 / Ø2.0 | 3.5 | FD6020 |



Shaping Drill

成型钻

- Each drill has depth marking lines from 7.0mm to 15.0mm.
- The dual marking system (grooves and laser markings) provides visual and radiographic depth verification during surgery.
- TiN coating on drills: Enhanced corrosion resistance and abrasion resistance.

| Diameter (D) | Length (L) | Ref. Code |
|--------------|------------|-----------|
| Ø 2.0 | 18 | SD2018S |
| Ø 2.8 | | SD2818S |
| Ø 3.3 | | SD3318S |
| Ø 3.6 | | SD3618S |
| Ø 4.2 | | SD4218S |
| Ø 4.8 | | SD4818S |



Stopper Drill

停止钻

| Diameter (D) | Length (L) | Ref. Code (Int'l Market) |
|--------------|------------|--------------------------|
| Ø 2.0 | 7.0 | SD2007M |
| | 8.5 | SD2008M |
| | 10.0 | SD2010M |
| | 11.5 | SD2011M |
| Ø 2.8 | 7.0 | SD2807M |
| | 8.5 | SD2808M |
| | 10.0 | SD2810M |
| | 11.5 | SD2811M |
| Ø 3.3 | 7.0 | SD3307M |
| | 8.5 | SD3308M |
| | 10.0 | SD3310M |
| | 11.5 | SD3311M |
| Ø 3.6 | 7.0 | SD3607M |
| | 8.5 | SD3608M |
| | 10.0 | SD3610M |
| | 11.5 | SD3611M |
| Ø 4.2 | 7.0 | SD4207M |
| | 8.5 | SD4208M |
| | 10.0 | SD4210M |
| | 11.5 | SD4211M |
| Ø 4.8 | 7.0 | SD4807M |
| | 8.5 | SD4808M |
| | 10.0 | SD4810M |
| | 11.5 | SD4811M |



Dense Drill

皮質骨钻

- Uses to remove and shape cortical bone to control initial stability in dense bone (type I & II & III).
- 使用于较致密的骨头，如1类、2类骨，3类骨也可使用。

| Diameter (D) | Ref. Code |
|--------------|-----------|
| Ø 3.9 | DD39 |
| Ø 4.3 | DD43 |
| Ø 4.8 | DD48 |
| Ø 5.3 | DD53 |



Drill Extension

牙钻延长器

- Less than 35Ncm torque is recommend.
- Extends drills & other handpiece instruments.
- 建议扭力不超过 35Ncm
- 延长钻针和其他手机用连接器

| Ref. Code |
|-----------|
| MDE150 |



Direction Indicator (Paralle Pins)

平行杆

- Confirms drilling direction and functions as a Parallel guide for additional osteotomies.
- Each end of the Direction Indicator has a different diameter.
- MDI2029 = Ø 2.0 and Ø 2.9
- MDI3348 = Ø 3.3 and Ø 4.8

- 于钻针制备过程中，确认钻入位置的角度及平行关系。
- 平行杆的每一端均为不同直径
- MDI2029 = dia2.0 / 2.9
- MDI3348 = dia 3.3/4.8

| Diameter (D) | Ref. Code |
|---------------|-----------|
| Ø 2.0 / Ø 2.9 | MDI2029 |
| Ø 3.3 / Ø 4.8 | MDI3348 |



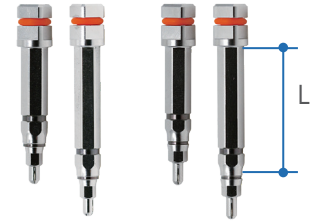
Ratchet Connector

板手连接头

- Used for inserting or removing a fixture with the Ratchet wrench.
- Excessive force can cause damage to internal hex of fixture.
- Marks on the shaft can indicate the position of fixture platform, especially in flapless surgery.

- 与棘轮扳手连结使用植入或取出植体
- 用力过多会造成植体内六角损坏
- 器械上标示之刻度线，可标示种植体的深度位置，尤其是在不翻瓣手术中

| Connection | Length (L) | Type | Ref. Code |
|------------|------------|-------|-----------|
| 2.1 | 15 | Short | RCS21 |
| | 20 | Long | RCL21 |
| 2.5 | 15 | Short | OMRCS25 |
| | 20 | Long | OMRCL25 |



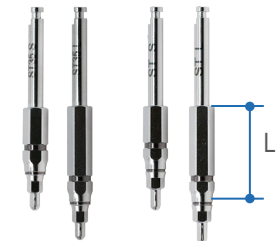
Handpiece Connector

手机连接头

- Delivers torque for the placement of a fixture with a handpiece.
- Easy and secure pick-up and delivery.
- Used to place implant without mount.
- Marks on the shaft can indicate the position of fixture platform, especially in flapless surgery.

- 连接头藉由手机扭力 锁入植体
- 安全容易使用
- 用于无携带体种植体植入使用 (尤其不翻瓣手术)
- 器械上标示之刻度线，可标示种植体的深度位置，尤其是在不翻瓣手术中

| Connection | Length (L) | Type | Ref. Code |
|------------|------------|-------|-----------|
| 2.1 | 10 | Short | HCS21 |
| | 15 | Long | HCL21 |
| 2.5 | 10 | Short | OMHCS25 |
| | 15 | Long | OMHCL25 |

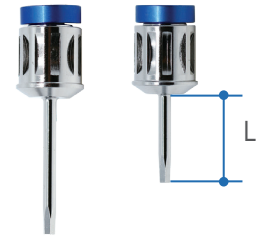


Hand Driver

螺丝刀

- Used for all Cover Screws, Abutment Screws, and Healing Abutments.
- Available in 2 lengths for added convenience.
- Hand Driver can be directly inserted into the Torque Wrench without using an adaptor.
- Hex. tip can with stand 35~45Ncm of torque without distorting
- 封口螺丝，基台螺丝及愈合基台连接使用
- 螺丝刀头可与扭力扳手连接使用，不需透过转接头
- 螺丝六角刀可承受 35-45 之扭力

| Length (L) | Type | Ref. Code |
|------------|-------|------------|
| 10 | Short | TCMHDS1200 |
| 15 | Long | TCMHDL1200 |



Ratchet Wrench

棘轮扳手

- Used to exert more force than the handpiece.
- No bearing system : No breakage and no corrosion problems.
- Arrow laser marking indicates direction of force.
- 提供比手机更多的扭力
- 无须轴承，没有生锈的问题
- 雷射箭头为指示施力方向

| Ref. Code |
|-----------|
| OMMRW040S |



Depth Gauge

测深杆

| Ref. Code |
|-----------|
| OMMDG200 |





T-PLUS

PRODUCTS

2022



STS3C2211P06

No.41, Wuquan 6th Rd., Wugu Dist., New Taipei City 248, Taiwan

TEL : + 886 - 2 - 2298 - 1950 FAX : + 886 - 2 - 2298 - 4353