

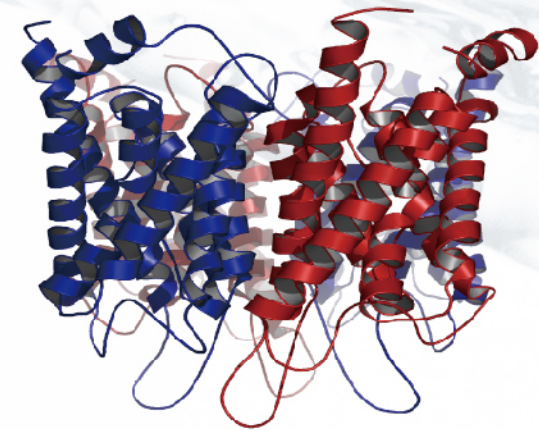
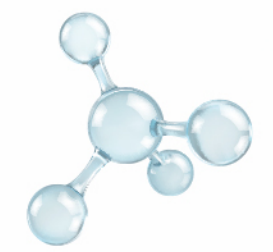
AQUAPORINS INTELLIGENT MOISTURIZING

# Self-Circulating Ultimate and Long-Lasting Moisturizing Series





# What are AQUAPORINS?



## AQUAPORINS

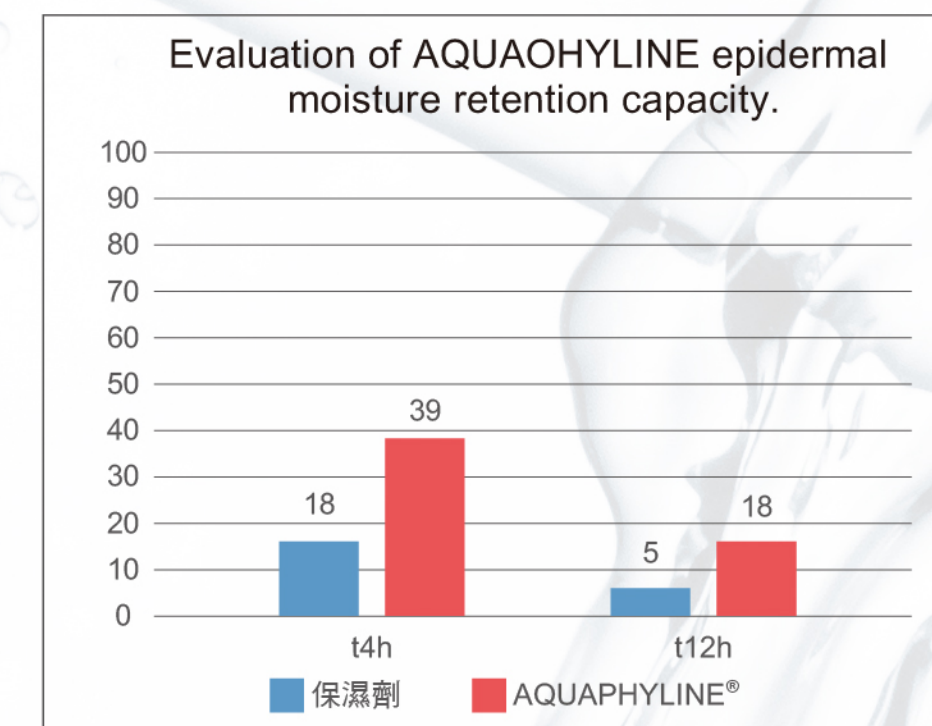
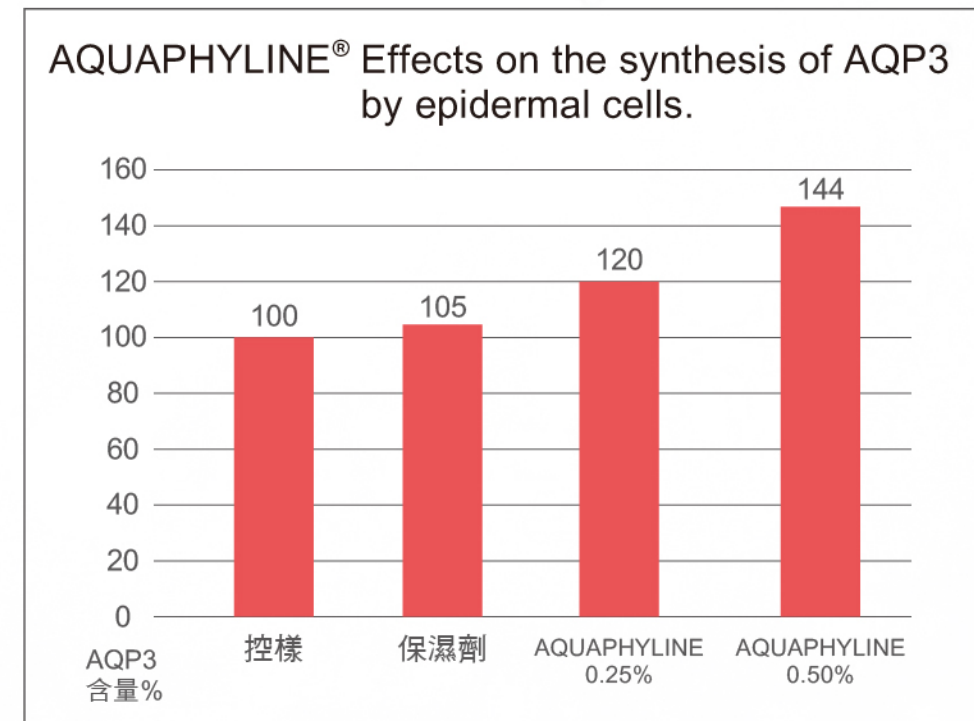
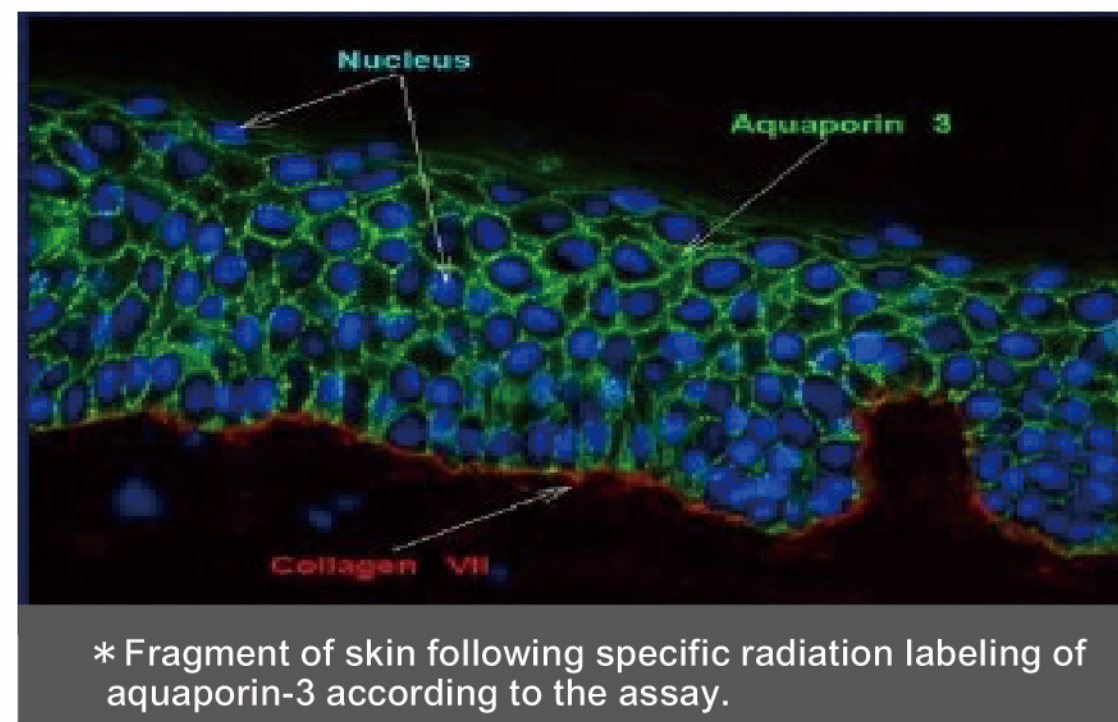
1991 | 2003

- Water moves rapidly into & out of cells
  - ◆ evidence that there were water channels
    - protein channels allowing flow of water across cell membrane

The aquaporins are a family of membrane water channels. AQP3 is involved in skin hydration and epidermal proliferation, maintains skin's surface and deep hydration, and forms a natural circulation of water molecules to maintain skin surface and deep moisture.

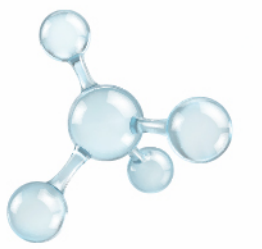
## AQUAPORINS MOISTURIZING SERIES

- Adopt 3D micronet, which is a coating technology designed to coat the active moisturizing formula ingredients and prevent the large-scale release of moisturizing factors at one time. Then slowly release the moisturizing factors to the skin through osmotic pressure. The release speed can be adjusted to reach 12 hours. Long-lasting moisturizing effect.
- AQUAPHYLIN: By stimulating the synthesis of lipids and proteins in the cell membrane, it can increase the activity of aquaporin AQP3 and promote the osmotic pressure of the water circulation in the epidermis to increase the normal water content in the cell.





# Postoperative Skin Care Solution for Aesthetic Lasers



After laser treatment, the epidermis cells are penetrated by energy and heat and a large amount of water is lost. The skin needs to be strengthened to rebuild, moisturize and repair. AQUAPHYLIN can be used before and after laser surgery to regulate the normal water content inside and outside cells through AQP, reduce postoperative skin moisture loss, and avoid dryness and discomfort.

- Restoring keratin barrier
- Long-acting sustained-release technology
- Increasing skin hydration
- Adjusting oil & water balance

## AQP WATERING CUBE HYALURONIC ACID



After hyaluronic acid (Restylane, Juvederm) injection use

60mL/100mL

## AQP NUTRITION PURE LIPID SAVING ESSENCE



After Poly-L-Lactic Acid (Sculptra) injection use

60mL

## LONG LASTING MOISTURIZING MASK



Specially designed for fragile, dry and dehydrated skin

5 pieces(Box)

## AQP HYDRATION BALANCING CREAM GEL



After hyaluronic acid (Restylane, Juvederm) injection use

60mL/100mL

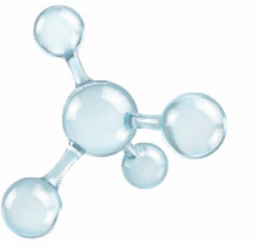
## AQP FIRMING MOISTURIZING NOURISH CREAM



After High Intensity Focused Ultrasound (Ulthera) treatment use

50mL





# AQP WATERING CUBE HYALURONIC ACID

After hyaluronic acid (Restylane, Juvederm) injection use



60mL/100mL

Moisturizes

Plump & firm

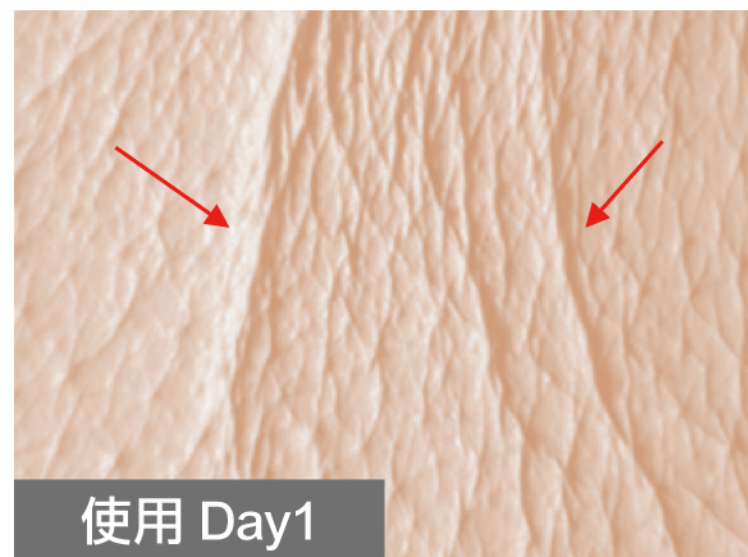
3D gloss

## Feature

Immediately and effectively increase the moisture content of the skin, increase the elasticity and firmness of the skin, make the skin shiny and crystal clear and give the skin a long-lasting moisturizing feeling.

## Ingredients

- AQUAPHYLIN
- CUBE 3
- Sericin
- Allantoin
- Middle Molecular Hyaluronic Acid
- r-PGA



使用 Day1



使用 Day28

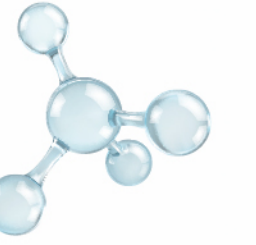
## Applicable skin type

- Normal skin
- Dry skin
- Aging skin

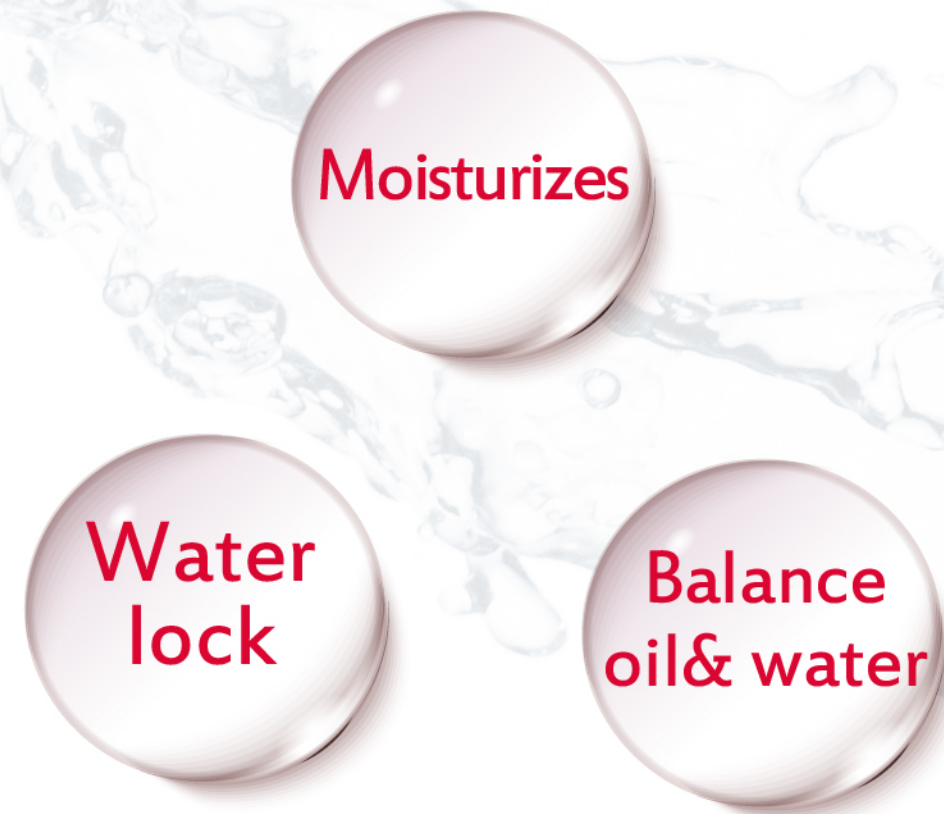


# AQP HYDRATION BALANACING CREAM GEL

After hyaluronic acid (Restylane, Juvederm) injection use



60mL/100mL



## Feature

Intelligently regulates the oil-water balance function of the skin and is suitable for T-shaped oily cheeks, dry cheeks and combination skin. Pure and high-concentration ingredients that are homogeneous with the skin lock in the moisture of the skin, prepare skin to be ageless and keep skin hydrated.

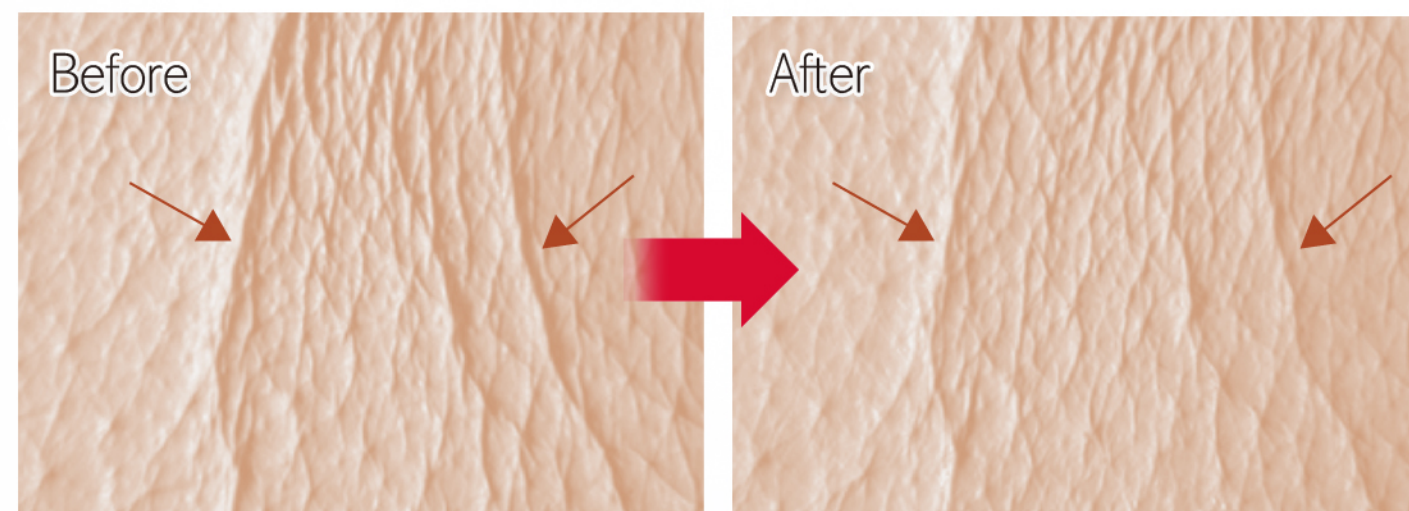
## Ingredients

- AQUAPHYLIN
- Sodium Hyaluronate
- Kinetin
- Porphyridium Cruentum Extract



## Applicable skin type

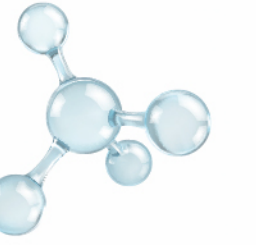
- Normal skin
- Oily skin
- Combination skin
- Young and mature skin





# AQP NUTRITION PURE LIPID SAVING ESSENCE

After Poly-L-Lactic Acid (Sculptra) injection use



60mL



## Feature

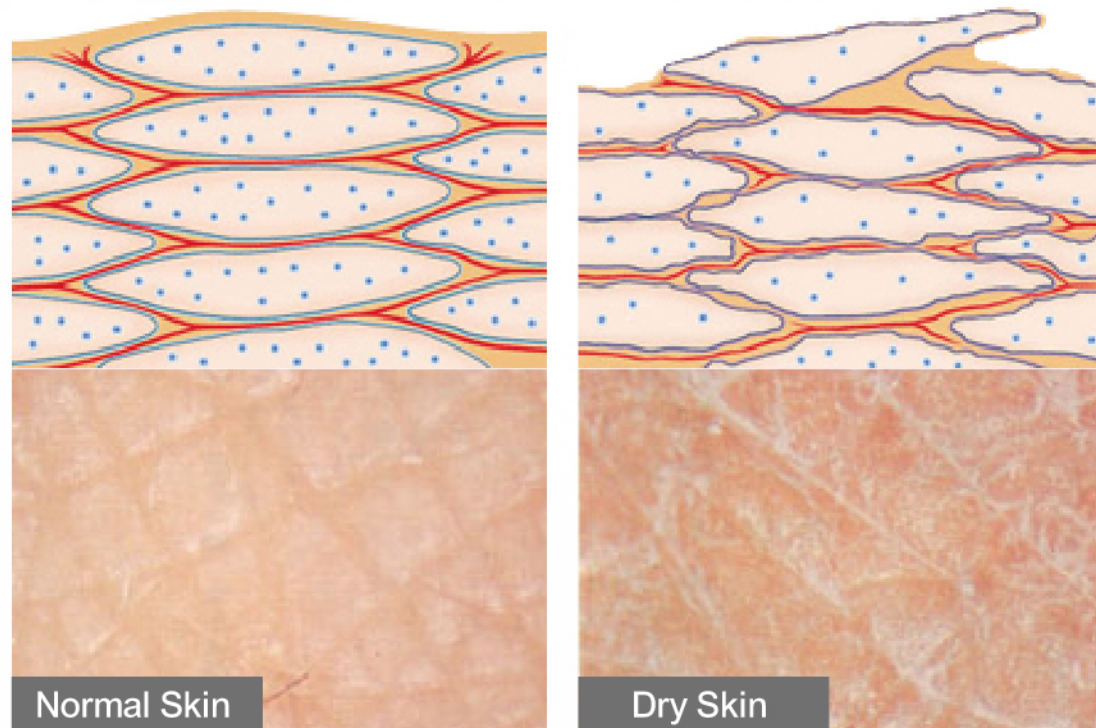
Comes from the lipid "CERAMIDES" that is closest to the skin and has the highest homogeneity, enhances the water-locking function of the epidermal barrier and makes skin silky-soft and healthy.

## Ingredients

- AQUAPHYLIN
- Ceramide EOP, NP, AP
- Laminaria Ochroleuca
- Acetyl Pentapeptide-1

## Applicable skin type

- Dry skin
- Aging skin



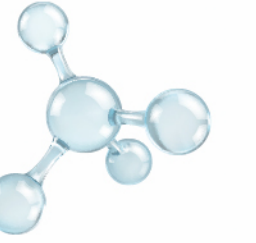
### ◀ Age 28, Female

After one month, the skin's moisture level has improved, pores have shrunk, skin texture has improved significantly, and skin is delicate and tender.



# AQP FIRMLING MOISTURIZING NOURISH CREAM

After High Intensity Focused Ultrasound (Ulthera) treatment use



50mL



## Feature

Gives life to the skin, improves skin texture, maintains the nourishment of the skin, increases the firmness of the skin, fights aging symptoms, and restores youthful and soft elasticity.

## Ingredients

- AQUAPHYLIN
- Natural Squalane
- DNA Renovating Matrix
- Superoxide Dismutase
- Ceramide EOP, NP, AP
- Retinol

## Applicable skin type

- Dry skin
- Aging skin



30 people, Asian women aged 32-45, used for 28 days, self-satisfaction test results





# LONG LASTING MOISTURIZING MASK



5 pieces(Box)

Long-lasting  
moisturizing

Condition  
the skin

Repair  
the epidermis

Soothes  
skin



## Feature

It is specially designed for sensitive, dry and water-deficient skin after non-surgical cosmetic surgery. It doubles the moisturizing effect, bids farewell to dry skin and locks in water for a long time, creating a watery beauty skin.

## Ingredients

- Sodium Hyaluronate
- Ceramide EOP, NP, AP
- Allantoin
- PPSE

## Applicable skin type

- Sensitive skin
- Dry and water-deficient skin



— LOVE · HOPE · PRIDE —



+886-981-302162



dxp01@aplovaty.com.tw



Sales Rep. Gia Lee



www.en.dermaxpert.com.tw Instagram : dermaxpert



# Thank you!



ASIA PACIFIC LOVATY  
COSMECEUTICAL CORPORATION

Address	Rm. B1, 13F, No. 502, Jiuru 1st Rd., Sanmin Dist., Kaohsiung City 807, Taiwan (R.O.C.)
TEL	+886-7-3864799 (FAX)+886-7-3864808
E-mail	dxp@aplovaty.com.tw
Website	https://www.dermaxpert.com.tw