

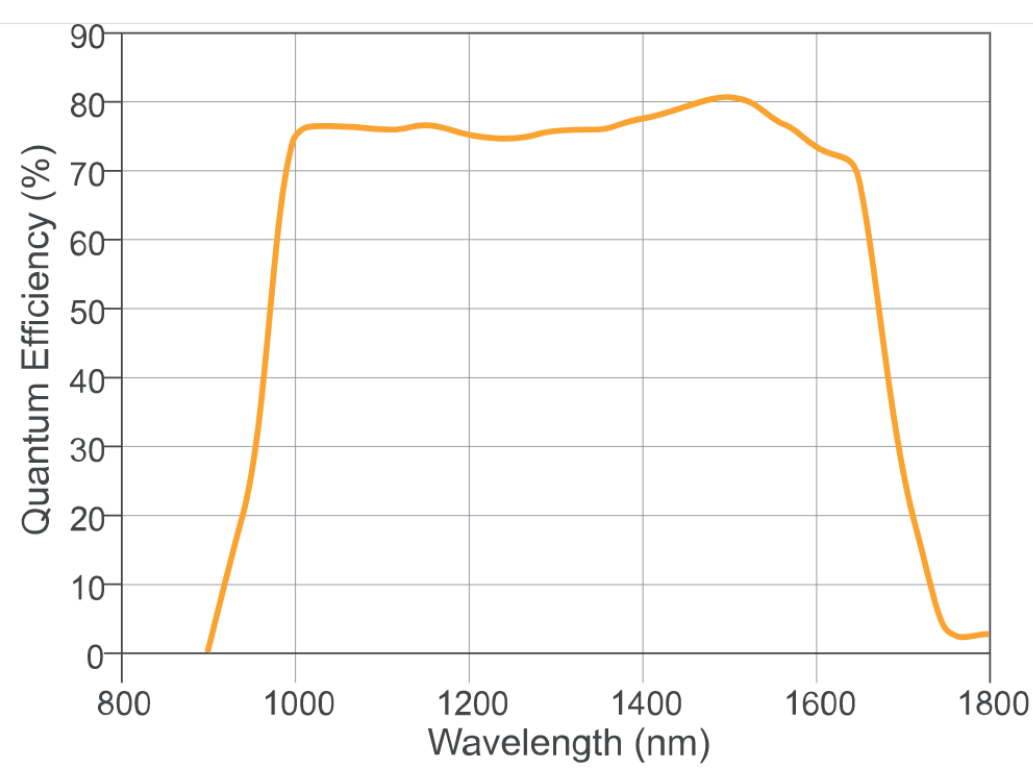
# Ninox Series

## High Resolution TEC Cooled InGaAs Camera



### Ninox 640SU

#### SWIR 深度製冷紅外相機

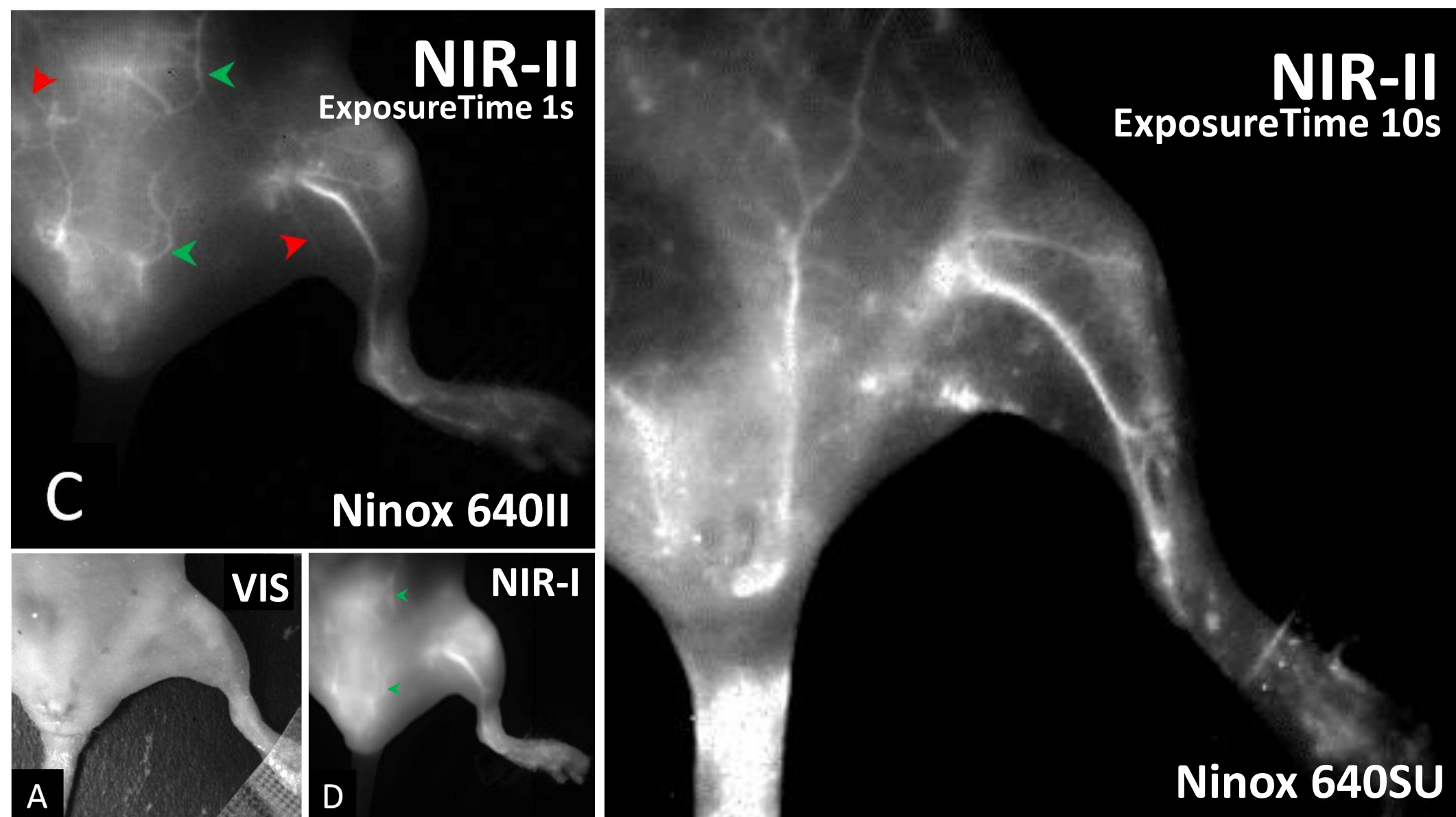
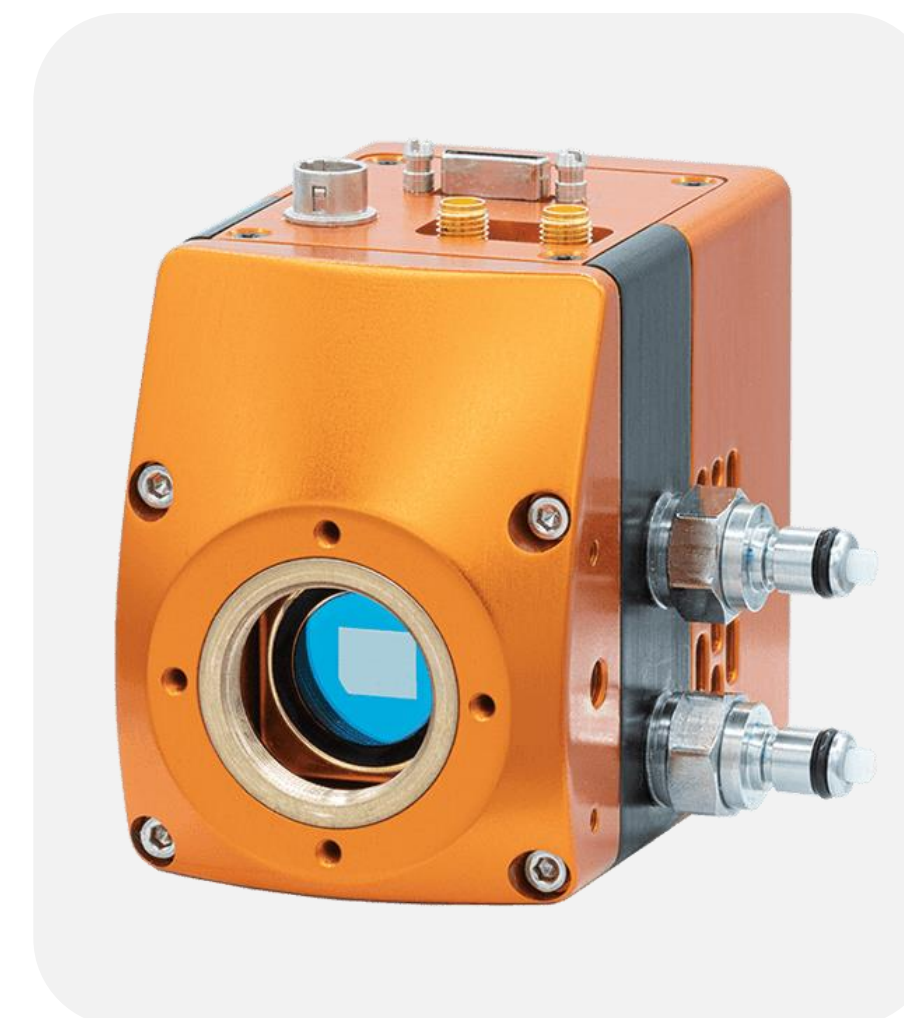
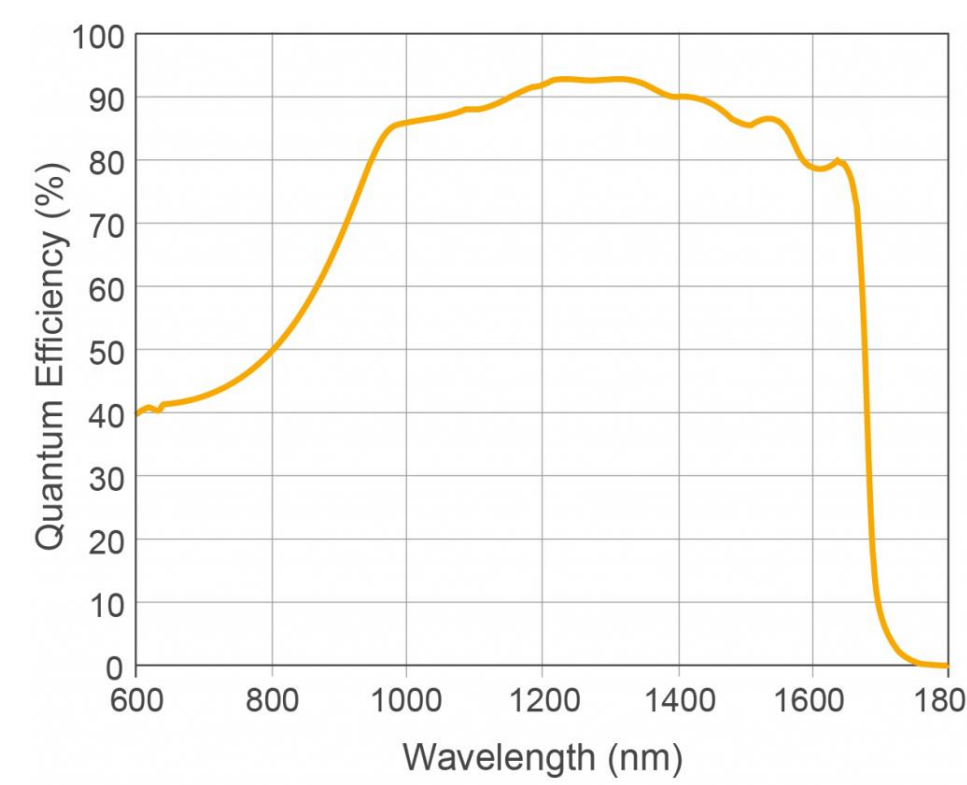


- **Vacuum cooled to -80°C**  
Enables ultra-long exposure times
- **Ultra-low dark current and read-noise**  
Resulting in the highest sensitivity SWIR camera on the market
- **15µm x 15µm pixel pitch**  
Enables highest spatial resolution
- **PentaVac Vacuum Technology**  
Guaranteed protection and integrity of sensor

- **Ultra Low Noise Sensor: 18e-**  
Enables ultimate low light Vis-SWIR image
- **Air Cooled VIS-SWIR technology**  
Air Cooled to -15°C. Enables low dark current for longer exposures
- **15µm x 15µm Pixel Pitch**  
Enables highest resolution VIS-SWIR image
- **Ultra High Intra-scene Dynamic range - 62dB (Typical)**  
Enables simultaneous capture of bright & dark portions of a scene

### Ninox 640II

#### VIS-SWIR 製冷紅外相機

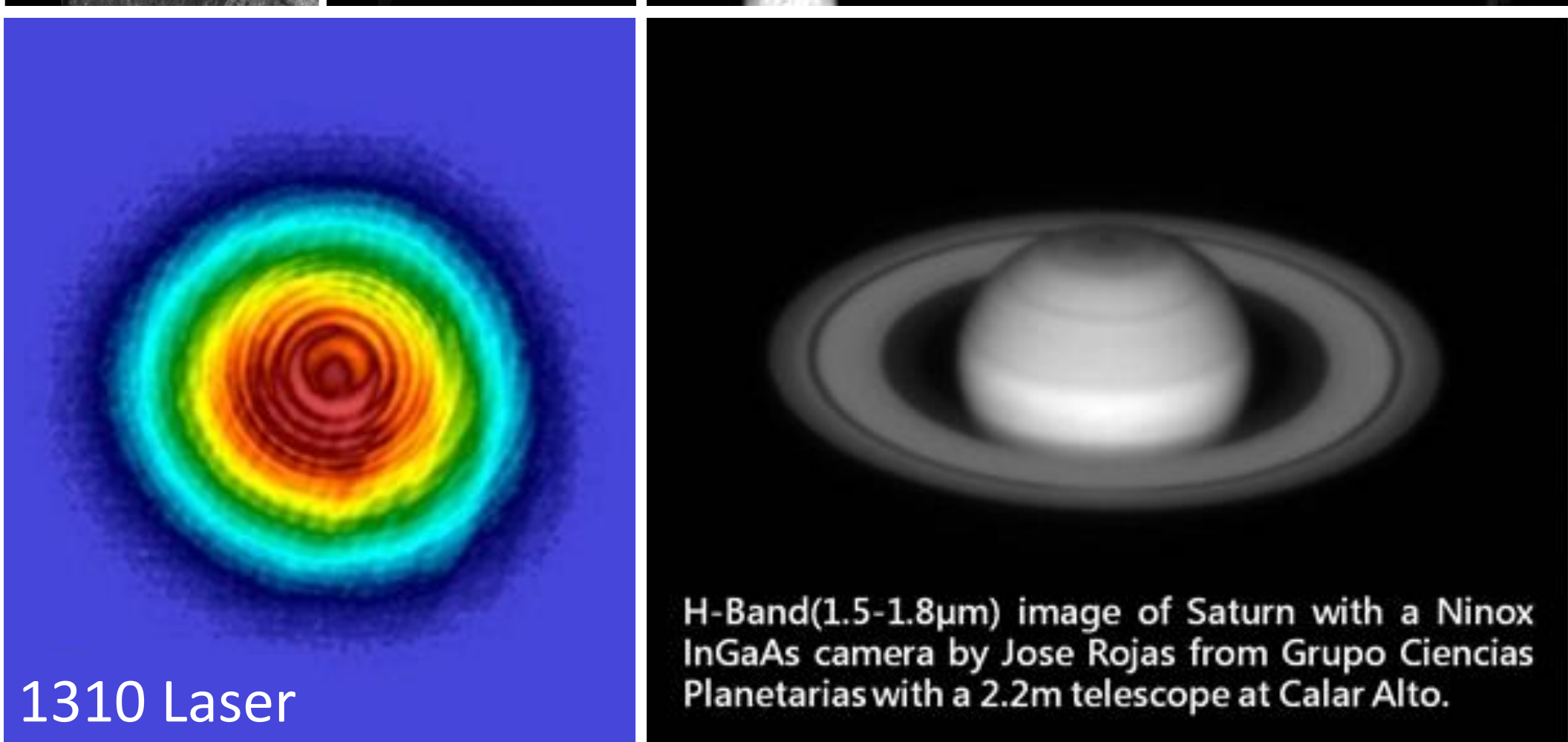


	Ninox 640SU	Ninox 640 II
<b>Sensor</b>	InGaAs	InGaAs
<b>Resolution</b>	640x512	640x512
<b>Pixel Size</b>	15µm	15µm
<b>TE Cooling</b>	-80 °C , Active	-15 °C , Active
<b>Frame Rate</b>	100 Hz	120 Hz
<b>Response</b>	0.9µm to 1.7µm	0.6µm to 1.7µm

### Applications

#### Scientific

- Astronomy
- Beam Profiling
- Thermography
- Hyperspectral Imaging
- NIR I,II Fluorescent Imaging



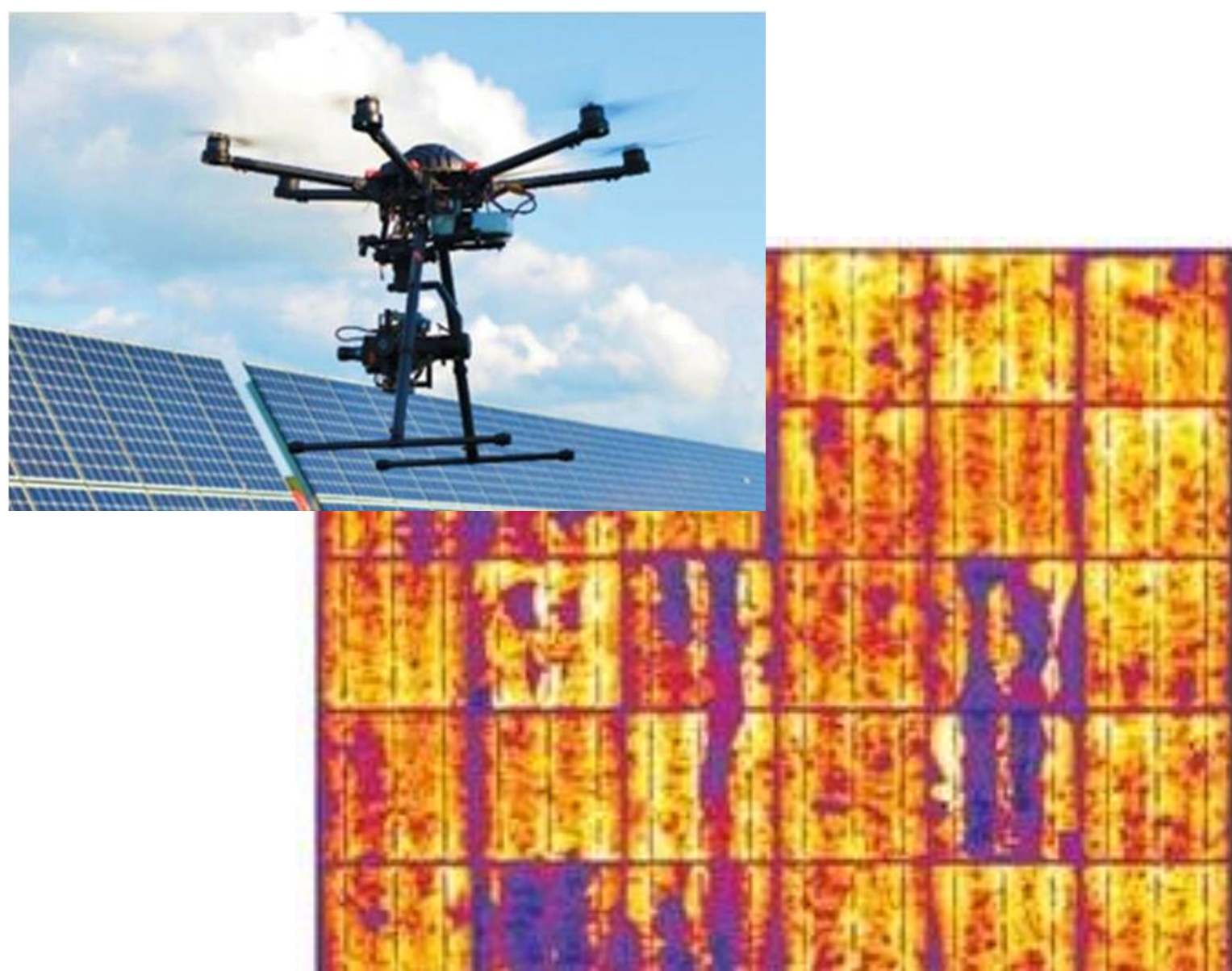
# VIS-SWIR InGaAs Camera

High resolution Visible Light - ShortWave Infrared InGaAs Camera



	Owl 1280	Owl 640T	FB-W2-M	FB-W4-M
<b>Sensor</b>	InGaAs(SCD)	InGaAs(SCD)	InGaAs(Sony)	InGaAs(Sony)
<b>Resolution</b>	1280x1024	640x512	1280x1024	640x512
<b>Pixel Size</b>	10um	10um	5um	5um
<b>TE Cooling</b>	15 °C , Active	15 °C , Active	15 °C , Active	15 °C , Active
<b>Frame Rate</b>	60 Hz	60 Hz	120 Hz	240 Hz
<b>Response</b>	0.6μm to 1.7μm	0.6μm to 1.7μm	0.4μm to 1.7μm	0.4μm to 1.7μm

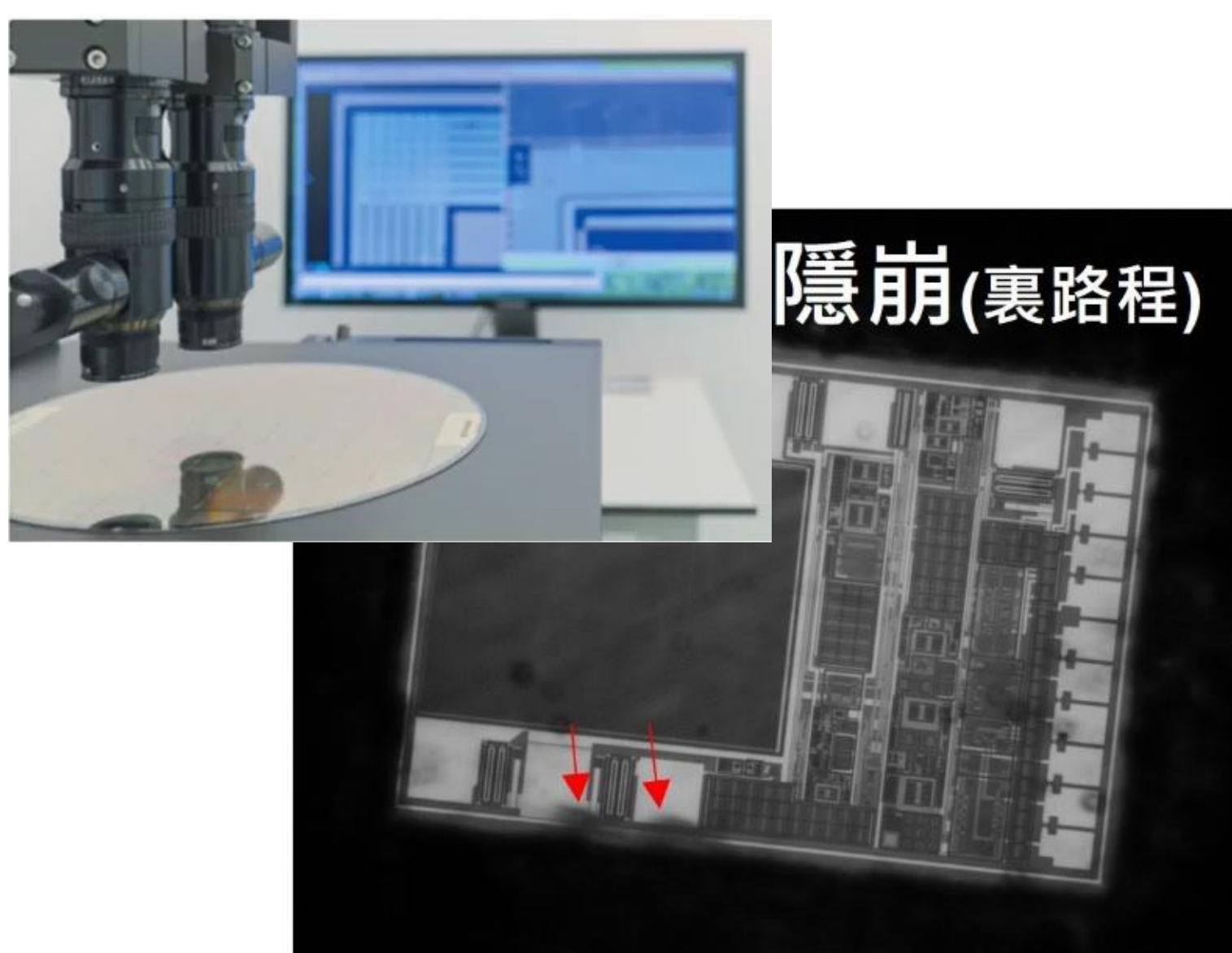
太陽板  
瑕疵檢測



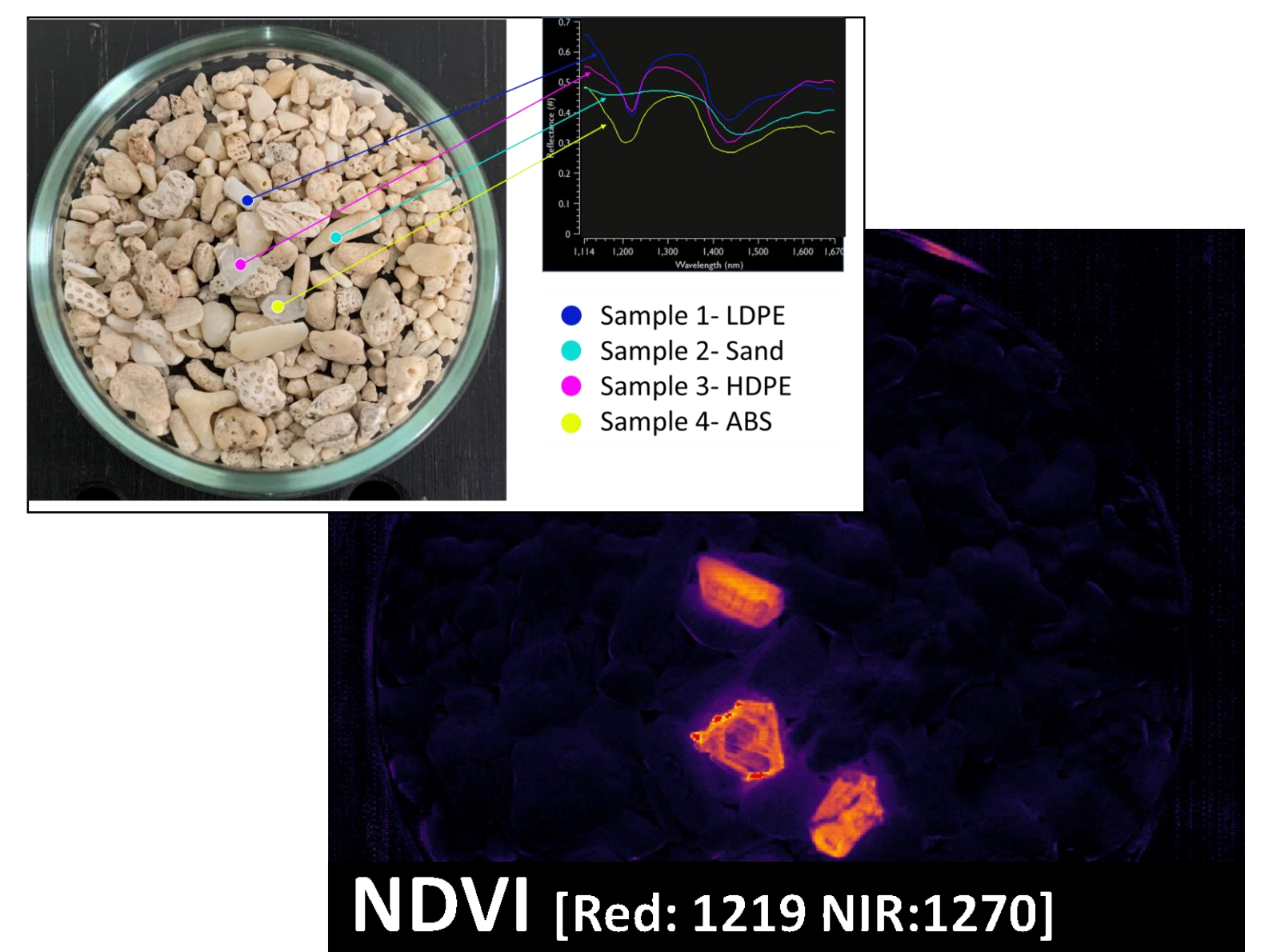
無人車  
視覺強化



半導體  
瑕疵檢測



高光譜  
物件辨識



# ISUZU OPTICS