

# Telehealth Cart & Suitcase

## Enable Remote Access to Medical Care

- / Tele-ICU
- / Tele-Rehab
- / Isolation Room
- / Teleconsultation
- / Emergency Services
- / Home-Based Patient Care



**ADVANTECH**

*Enabling an Intelligent Planet*

**DeviceOn/iService**

**CE FC**



intel partner  
Titanium IoT Solutions



# Telehealth Cart

## Enhanced Patient Care

The omni-directional speakerphone and full HD PTZ camera enable face-to-face patient consultations in real time



## Key Features

01

### Application ready

The provision of a PTZ camera and speaker enable teleconferencing

02

### Diverse peripherals

Wide range of medical-grade peripherals can be integrated and stored in the drawer

03

### Battery monitoring

Built-in long lasting battery supports mobile operation and remote battery software with open API for integration

## AMiS Medical Carts

Ergonomically designed carts with electronic height adjustment, medical-grade certification, and battery management software

## Medical Devices



3-in-1 scope



Fundus scope

Wireless

# Telehealth Suitcase

## Mobile Virtual Clinic

The pre-install speaker, tablet and USB hub enable healthcare consultations from any location at any time.



## Rugged Portable Case

The IP67-rated case protects all equipment during transport to ensure reliable operation



Handheld ultrasound



Digital stethoscope



12-lead portable ECG



## Key Features

01

### Grab-and-go

Ideal for emergency response situations and mobile/pop-up clinics with limited space

02

### Connectivity

Built in Wi-Fi, 4G LTE, and Bluetooth communication technologies

03

### Convenient size

The kit adheres to the dimensions for carry-on luggage, ensuring easy air travel worldwide



# Co-Creating Value with Telehealth Innovations

Advantech's telehealth cart and suitcase are compatible with diverse video conferencing software and medical apps. These telehealth workstations serve as a centralized platform for integrating multiple diagnostic devices and connecting healthcare professionals with patients and colleagues via a secure interface. Leveraging its reliable telehealth hardware, Advantech hopes to co-create with various software partners to develop unique solutions and differentiated services that deliver value and telehealth applications.



Scheduling



Medical Device  
Integration



Video Conferencing



Reporting

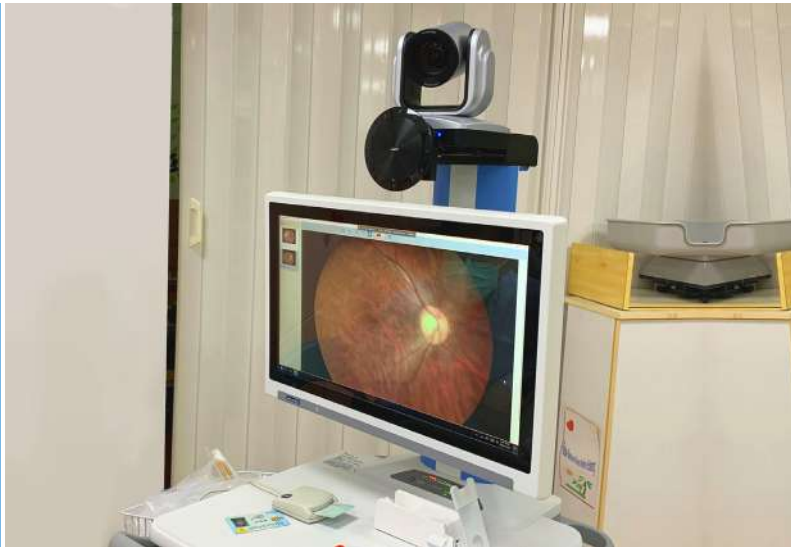
## Establish Virtual Clinics Rapidly Easy Deployment in Diverse Medical Environments

Advantech's telehealth solutions connect patients with doctors to increase remote access to medical care. Doctors can use telehealth workstations to interact with patients in real time via the video interface. Additional devices and peripherals can also be integrated to support diverse applications.

## DeviceOn/iService

DeviceOn/iService software is designed to provide a comprehensive tool for managing applications and integrated peripherals and is compatible with Advantech devices equipped with Windows, Linux, or Android operating system. Benefits are reduce management costs, improve system availability and improve customer satisfaction.

# Application Story



## Telehealth Improves Access to Medical Resources for Diabetics

Approximately 463 million adults worldwide are living with diabetes. In Taiwan, about 10% of the population has diabetes. Accordingly, people with diabetes must have regular eye examinations by an ophthalmologist or optometrist specializing in diabetes-related eye health. For older diabetics living in rural areas, a lack of local facilities means they have to travel 1.5 hours to a neighboring district to attend follow-up appointments. The implementation of Advantech's telehealth solution has dramatically improved access to diabetes-related healthcare in rural areas of Taipei and New Taipei City.

A lack of medical resources and lengthy travel times can cause treatment delays and result in additional medical expenses. But with Advantech's telehealth solution enabling the realization of telehealth services, patient travel times are reduced to under 30 minutes, improving the accessibility of medical resources. Now, elderly patients not only have easier access to medical care, but doctors can also extend the range of health-care services they provide.

## Expanded Healthcare Services



Tele-ICU/  
Isolation Room



Tele  
Rehabilitation



Home-Based  
Patient Care



Emergency  
Services

# Solution Offerings

## Telehealth Cart AMiS-72



- Aver PTZ Cam520
- Jabra 510-UC speaker
- 21" all-in-one computer
- AMiS\_Link battery management software
- Power cable

## Telehealth Suitcase AMiS-22



- Rugged case
- Jabra 510-UC speaker
- Industrial tablet
- USB hub

## Medical Devices (optional)



3-in-1 scope



Fundus scope



Wireless ultrasound



Digital stethoscope



12-lead portable ECG



Advantech Medical Cart



Product Video

### Advantech Headquarters

No. 1, Alley 20, Lane 26, Rueiguang Road, Neihu District, Taipei, Taiwan 11491  
Phone: 886-2-2792-7818 [www.advantech.com](http://www.advantech.com)

US/Canada: 1-888-576-9668  
Europe: 00800-2426-8080/8081  
Netherlands: 31-76-5233100  
China: 800-810-0345

Taiwan: 0800-777-111  
Japan: 0800-500-1055  
Korea: 080-363-9494  
Other countries: 0800-777-111

# ADVANTECH

*Enabling an Intelligent Planet*

[www.advantech.com](http://www.advantech.com)

Please verify specifications before quoting. This guide is intended for reference purposes only.

All product specifications are subject to change without notice.

No part of this publication may be reproduced in any form or by any means, electronic, photocopying, recording or otherwise, without prior written permission of the publisher.

All brand and product names are trademarks or registered trademarks of their respective companies.

© Advantech Co., Ltd. 2021